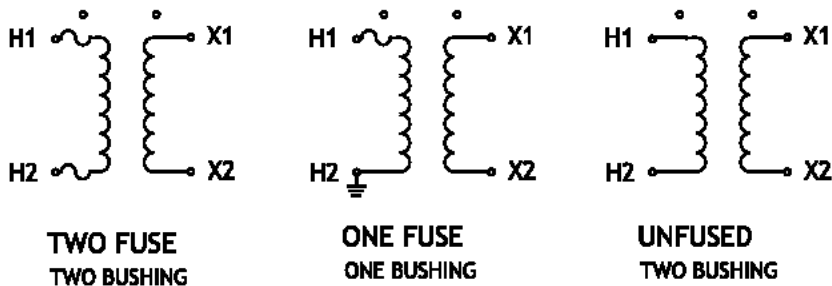


**Model V21.1 – Medium Voltage Potential Transformer**  
**Maximum System Voltage 15.5 kV, BIL 110kV full wave**



- UL and cUL Approved (File #E247592)
- As per ANSI/IEEE C57.13 OR IEC 60044 OR relevant standard

TABLES (Specify Catalog # and Group with the RFQ)



**INSULATION LEVEL**

15.5 kV, BIL 110 kV full wave

**FREQUENCY**

60 Hz (50 Hz upon request)

**ACCURACY CLASS**

0.3WXMZY, 1.2ZZ @ 100% rated V, 120V based ANSI burden

0.3WXMZY, 1.2ZZ @ 58% rated V, 69.3V based ANSI burden

**THERMAL RATING**

1500 VA @ 30 deg. C ambient

1000 VA @ 55 deg. C ambient

**OUTER ENCAPSULATION**

Resin Encapsulated

**PRIMARY TERMINALS**

1/4"-20 Brass screw with one flat washer and lock washer

**SECONDARY TERMINALS**

M5X0.8 Female Insert, with brass slotted pan head screw, two plain washers and one lock washer

**APPROX. WEIGHT**

90 lbs.

**PLATED STEEL MOUNTING BASE**

**CUSTOM OPTIONS (CONTACT US)**

- Different Ratios, Accuracies
- Non-standard thermal rating
- Different encapsulation
- Different secondary termination
- Special mounting needs etc.

**Model V21.1 – Medium Voltage Potential Transformer**  
**Maximum System Voltage 15.5 kV, BIL 110kV full wave**

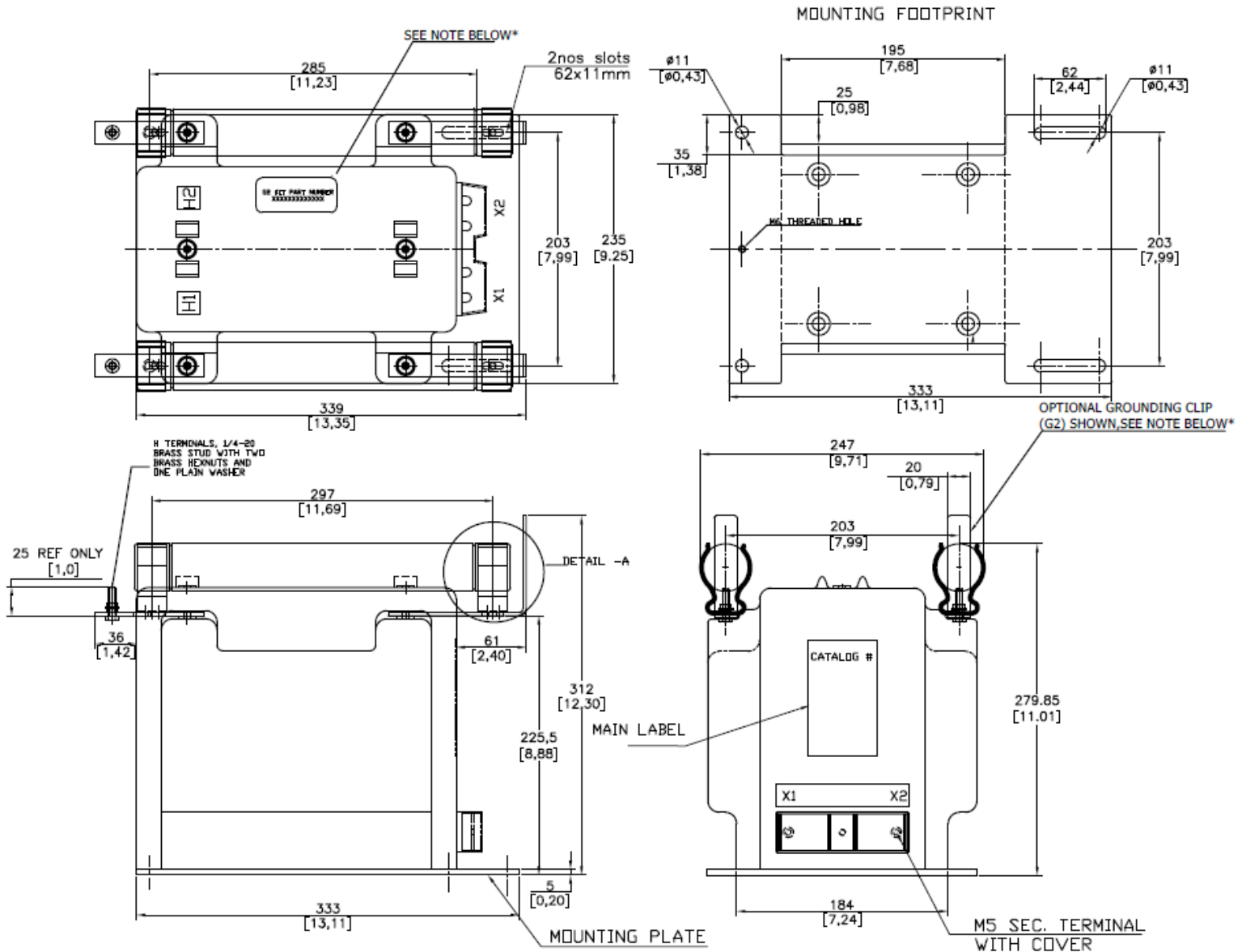
TWO BUSHING					
CATALOG # WITH FUSES	CATALOG # WITH FUSES AND GROUNDING CLIPS	GROUP	PRIMARY VOLTAGE	RATIO	SECONDARY VOLTAGE
V21.1-2-242FF	V21.1-242FFG2	1	2400	20:1	120
V21.1-2-422FF	V21.1-422FFG2	1	4200	35:1	120
V21.1-2-482FF	V21.1-482FFG2	1	4800	40:1	120
V21.1-2-662FF	V21.1-662FFG2	1	6600	60:1	110-50Hz
V21.1-2-722FF	V21.1-722FFG2	1	7200	60:1	120
V21.1-2-842FF	V21.1-842FFG2	1	8400	70:1	120
V21.1-2-113FF	V21.1-113FFG2	2	11000	100:1	110-50Hz
V21.1-2-123FF	V21.1-123FFG2	2	12000	100:1	120
V21.1-2-12471FF	V21.1-12471FFG2	2	12470	104:1	120
V21.1-2-1322FF	V21.1-1322FFG2	2	13200	110:1	120
V21.1-2-1382FF	V21.1-1382FFG2	2	13800	115:1	120
V21.1-2-1442FF	V21.1-1442FFG2	2	14400	120:1	120

SINGLE BUSHING					
CATALOG # WITH FUSE	CATALOG # WITH FUSE AND GROUNDING CLIPS	GROUP	PRIMARY VOLTAGE	RATIO	SECONDARY VOLTAGE
V21.1-242F	V21.1-242FG1	4A	2400	20:1	120
V21.1-422F	V21.1-422FG1	4A	4200	35:1	120
V21.1-482F	V21.1-482FG1	4A	4800	40:1	120
V21.1-722F	V21.1-722FG1	4A	7200	60:1	120
V21.1-7621F	V21.1-7621FG1	4A	7620	63.5:1	120
V21.1-7971F	V21.1-7971FG1	4A	7970	66.4:1	120
V21.1-842F	V21.1-842FG1	4A	8400	70:1	120
V21.1-113F	V21.1-113FG1	4B	11000	100:1	110-50Hz
V21.1-123F	V21.1-123FG1	4B	12000	100:1	120
V21.1-12471F	V21.1-12471FG1	4B	12470	104:1	120
V21.1-1322F	V21.1-1322FG1	4B	13200	110:1	120
→ V21.1-1382F	V21.1-1382FG1	4B	13800	115:1	120
V21.1-1442F	V21.1-1442FG1	4B	14400	120:1	120

**Model V21.1 – Medium Voltage Potential Transformer**  
**Maximum System Voltage 15.5 kV, BIL 110kV full wave**

**DIMENSIONS:** Dimensions are in mm [inches]

**TWO BUSHING, TWO FUSE**

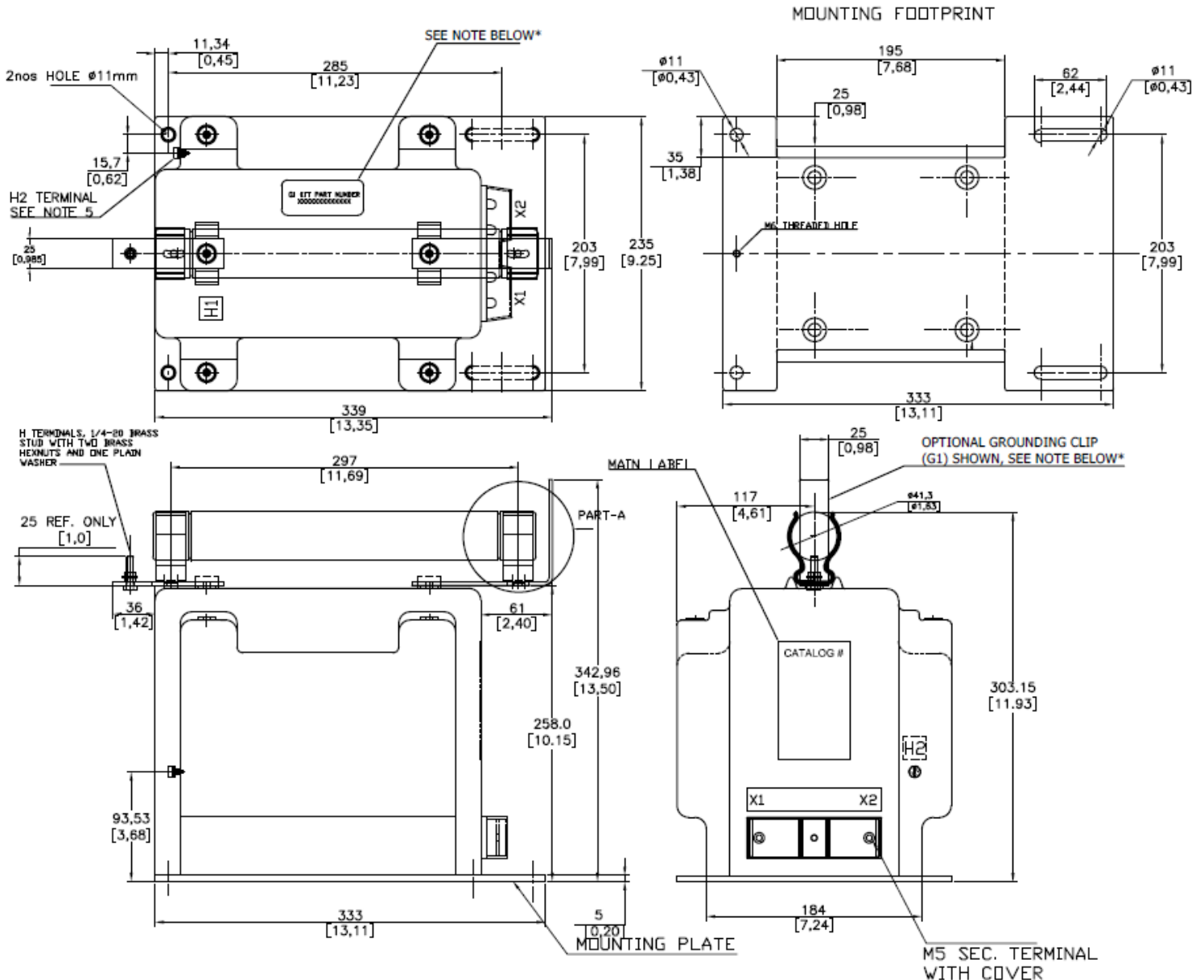


- \*Units with optional grounding clips (G2) as shown have the additional label with the corresponding G2 part number listed
- Standard Fuse:
  - 15.5kV, 1.0E fuse for primary voltages below 10kV
  - 15.5kV, 0.5E fuse for primary voltages above 10Kv
- Fuse clips accept 1.63” diameter fuses with Max. length of 12.87”
- Fuses are intended to protect the system and not the PT in the event of a failure

**Model V21.1 – Medium Voltage Potential Transformer**  
**Maximum System Voltage 15.5 kV, BIL 110kV full wave**

**DIMENSIONS: Dimensions are in mm [inches]**

**SINGLE BUSHING, ONE FUSE**



- \*Units with optional grounding clips (G1) as shown have the additional label with the corresponding G1 part number listed.
- Standard Fuse:
  - 15.5kV, 1.0E fuse for primary voltages below 10kV
  - 15.5kV, 0.5E fuse for primary voltages above 10kV
- Fuse clips accept 1.63” diameter fuses with Max. length of 12.87”
- Fuses are intended to protect the system and not the PT in the event of a failure