



ADVANCED POWER  
TECHNOLOGIES



APTVIEW  
Enabled

# Integrated Power Center

[www.appt-power.com](http://www.appt-power.com)  
1501 Veterans Memorial Pkwy E  
Lafayette, IN 47905  
(765) 446-2343

**SAFE SMART SERVICEABLE SWITCHGEAR &  
ENGINEERED POWER SYSTEM SOLUTIONS**



# IPC Features

Integrated Power Centers (IPCs) combine electrical distribution equipment and building management controls into a single factory-assembled and pre-wired system. This approach replaces the traditional method of independently mounting each panelboard, lighting control and building management system. IPCs can be customized further with the addition of third party components, such as building management systems, automatic transfer switches or power conditioners.

- IPC sections are assembled together at the factory, reducing labor and installation time at the job site
- Close coupling sections eliminate the need for interconnecting conduits, box connectors, and shortens feeder cable runs
- Three large rectangular openings are provided between sections, allowing you to quickly and easily route cables

## Benefits

- Saves electrical room wall space with smaller footprint.
- Installs faster to complete projects ahead of schedule.
- Lower installation and material costs.
- Contributes LEED points, reduced materials.
- Reduced material handling

## Applications

Commercial Buildings  
Educational Campuses  
Commercial Office Buildings

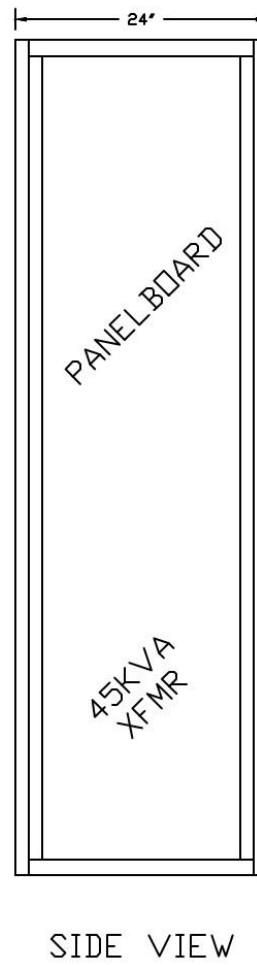
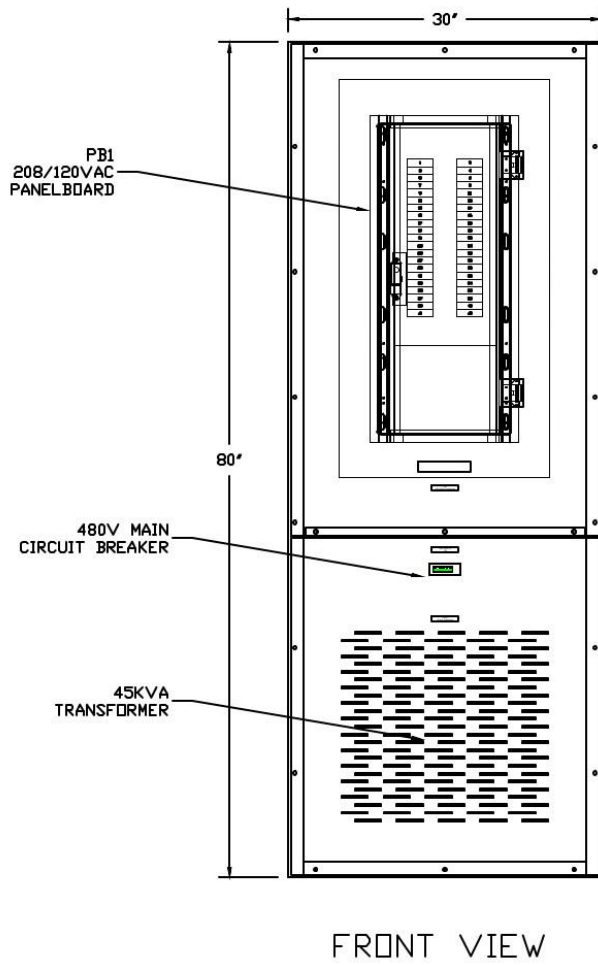
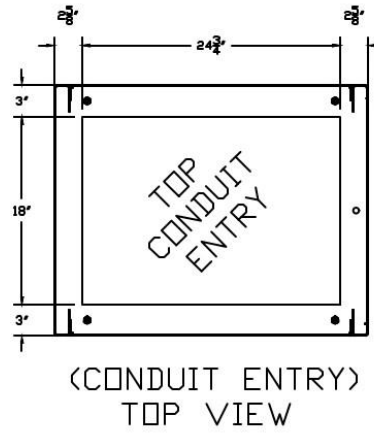
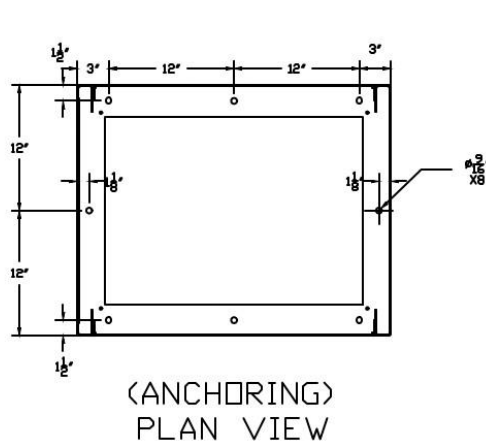


## Optional Cold Weather Upgrade

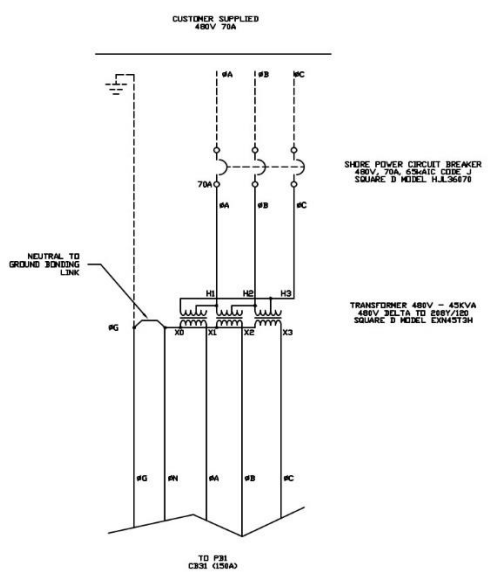
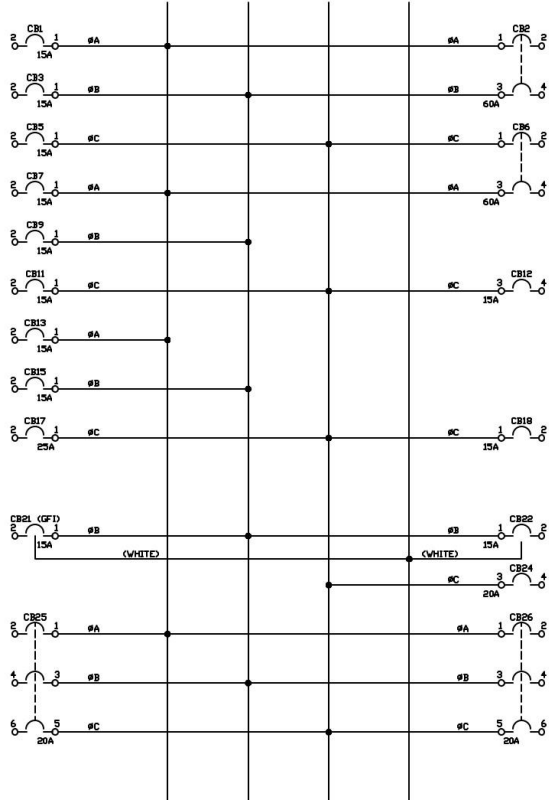
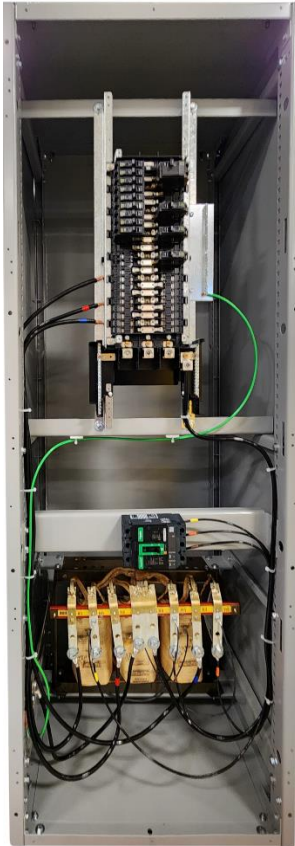
Adds the following to the ICC

Genset Enclosure Space Heater Adjustable Thermostat will be provided and wired and installed with the sensing bulb mounted on top of ICC. Thermostat will turn on the genset enclosure space heaters when the engine is not running and the enclosure temperature drops below the thermostat setting.

# Drawings



# Drawings Cont.



\*Due to continued product improvement, products delivered may differ from what is pictured.  
 \*Optional Equipment Features Are Often Shown in Most Figures.  
 \*Option Availability Subject to Product Series.