



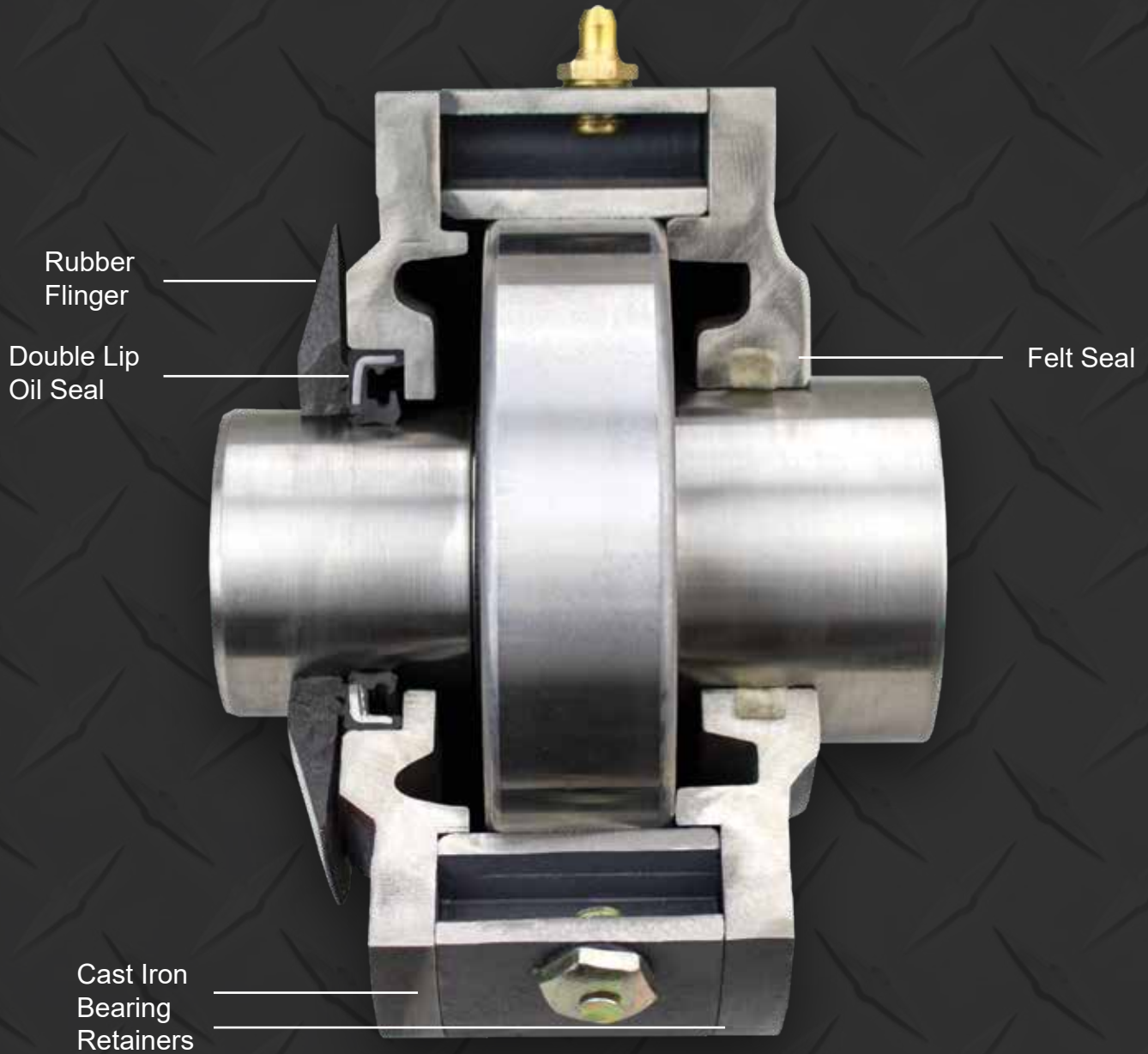
TECHTOP

electric motors





Ingress Protection



Ingress Protection: Contaminants and moisture can lead to early life failure of a motor. Techtop has gone the extra mile in engineering a system of seals, gaskets and drains that protect our bearings and internal motor components from damage due to these foreign invaders. Wherever your Techtop motor finds itself, it will be protected from the environment, and ready for a long productive life.



Nipple Seals
Move with
Leads



Slingers

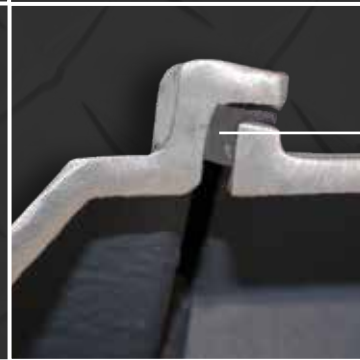
Threaded
Conduit Entries



Conduit Box

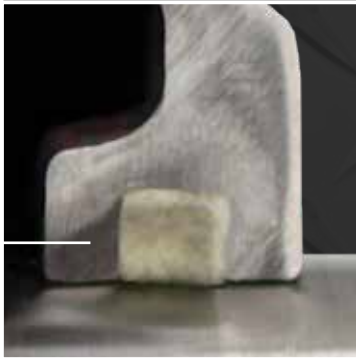


Double Lip
Oil Seal Close Up



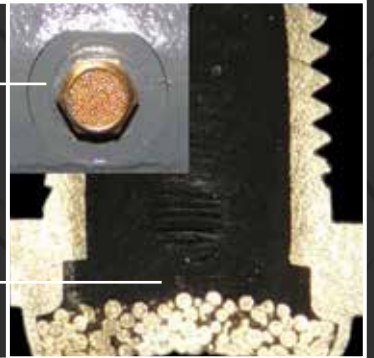
Fully Gasketed
Conduit Box

Felt Seal
Close Up

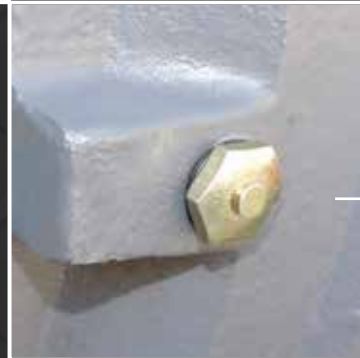


Breather
Close Up

Breather
Cross Section

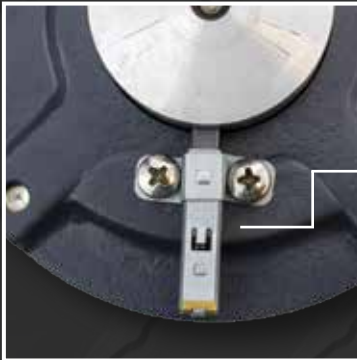


Pressure
Relief





Inverter Protection



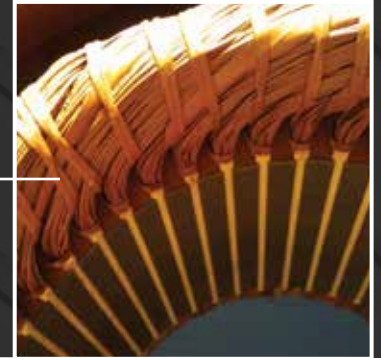
Brush*



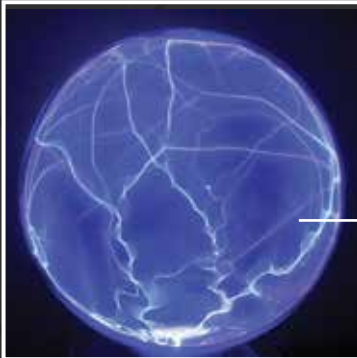
Top Coil
Cross Section



Lap Winding
Pattern



Prevents Corona
Degradation



VPI Tank



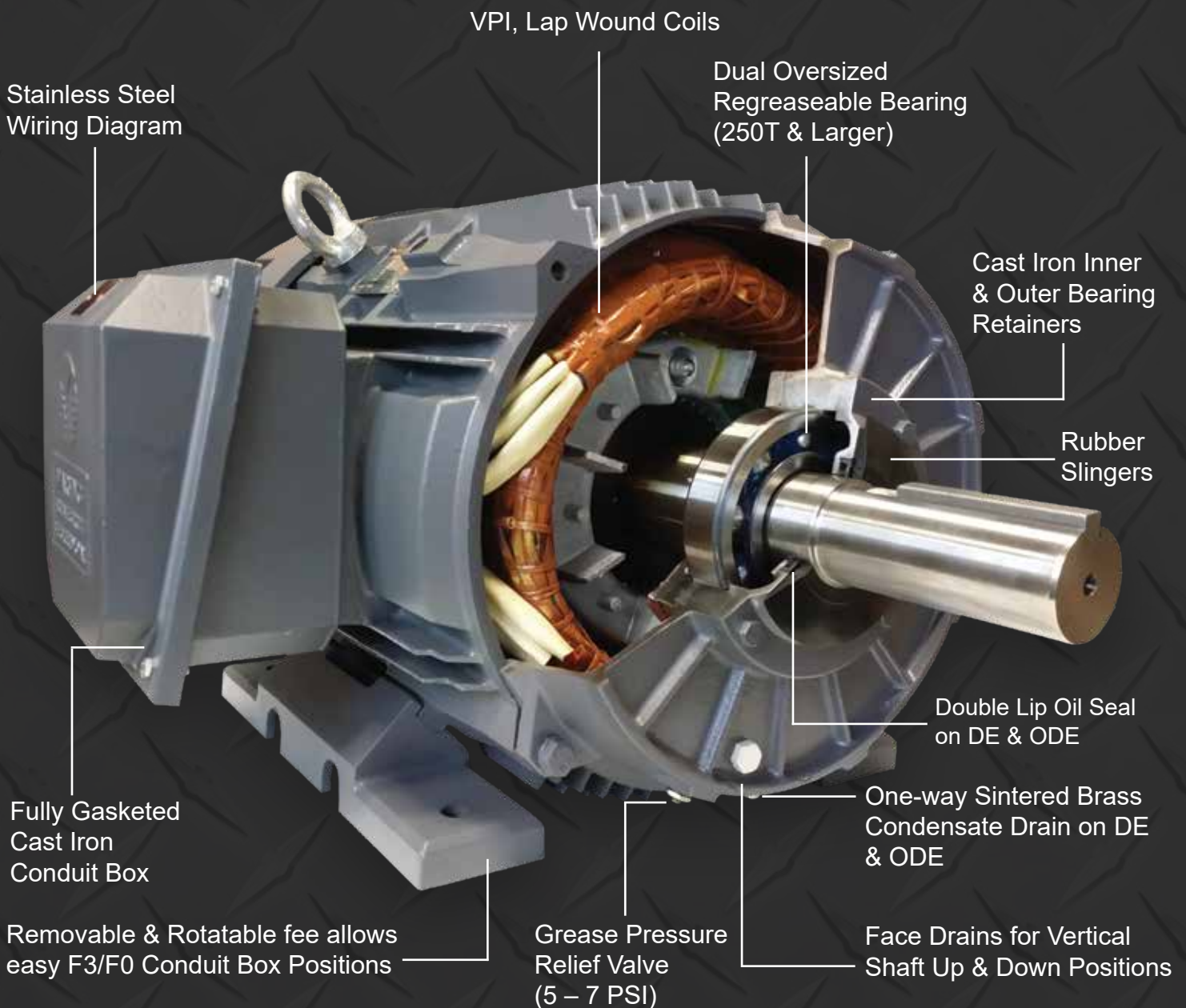
Inverter Protection: Variable speed applications are becoming more prevalent in today's market, especially with the advent of modern pulse width modulated (PWM) drives. Motors now need to deal with significant voltage spikes, heating due to low speeds, shaft voltages and the slow degradation of the insulation by corrosive ozone produced as a result of corona effect. Techtop's inverter duty wire, phase insulation, and our lap winding pattern insulates our coils while minimizing the chance of short. Our vacuum impregnation process eliminates air bubbles, reducing the deleterious effects of corona. Our efficient design reduces temperatures when running at low speeds allowing for 15:1 constant torque turndowns. Inverter? We're ready.

* Optional Accessory



Rugged Construction

Rugged Construction: Often when a Techtot motor ships, it is unknown what application it will be employed into. This means that each Techtot motor needs to be ready to perform in a wide range of applications and we prepare them for the task. From its cast iron frame and dual oversized bearings, to its advanced bearing protection and greasing system, a Techtot motor is ready for your toughest mechanical applications. Our system of gaskets, seals and silicone sealants along with our sintered brass breather drains give us an IP55 rating while keeping our motors dry and clean on the inside. Our insulation system, careful handling of leads, end turns, and crossover tubing provides for a long trouble free life. Tough application? We're ready.





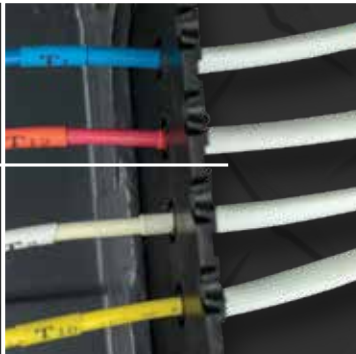
Special Features



Stainless Nameplate and Separate Connection Diagram



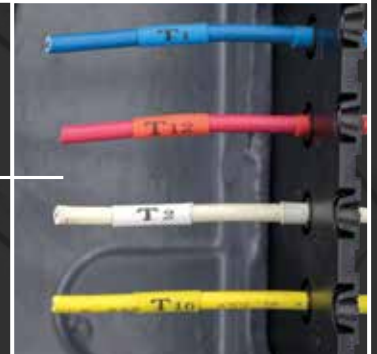
Serial Numbers also on Exterior of Crate



Glass Lead Sleeves



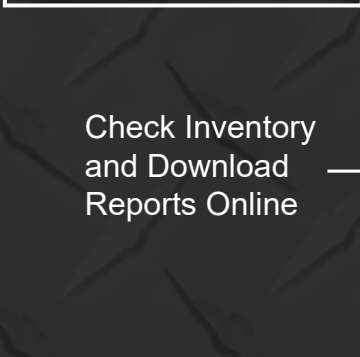
Permanent Legible Lead Markers



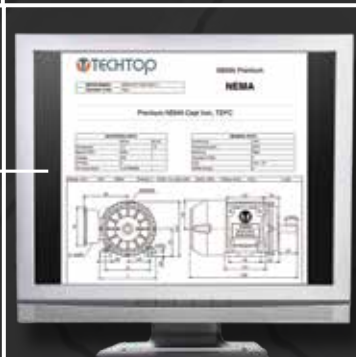
Reusable Crate



Dual Grounding



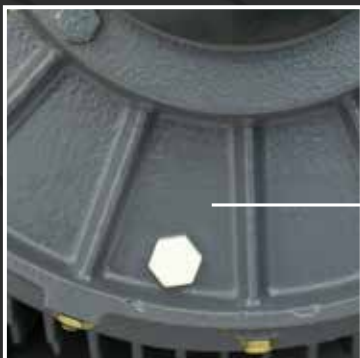
Check Inventory and Download Reports Online



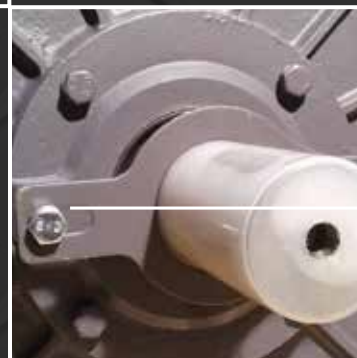
Anti-Bacterial Coating on Windings



Shaft Locks Protect Motors in Shipping



3-Part Acid Resistant Epoxy Coating





Additional Features: Aside from constructing a motor that is rugged, efficient and versatile, Techtop also pays attention to the little things that improve the overall Techtop experience. Our color coded lead wires, stainless steel connection, diagrams and enclosed lifting straps simplify the installation process. Corrosion resistant hardware, tropicalized windings, IP55 protection system and versatility features such as removable feet and interchangeable bearing retainers make our motors ready for any application. Even our packaging is designed for ease of use and simplicity. Your time and efforts are important to us and we want to do what we can to make the experience as trouble free as possible.



Versatile



Removable Feet

Round Body



F3



F1

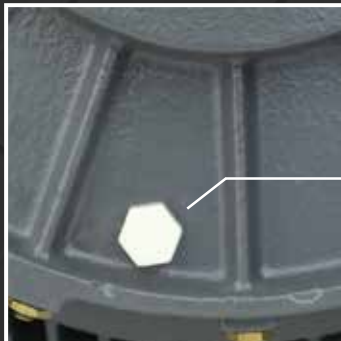
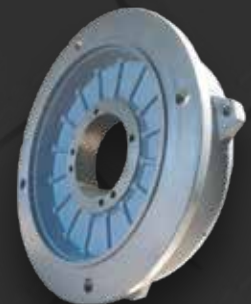


F2

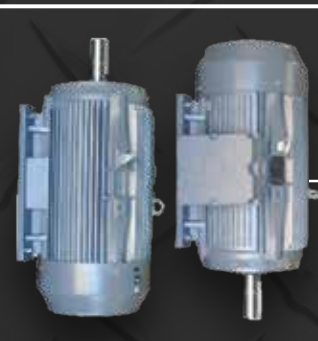
C Face



D Flange



Face Drains for Vertical Installation



Vertical Installation

Snap Rings Holding Bearing in Place

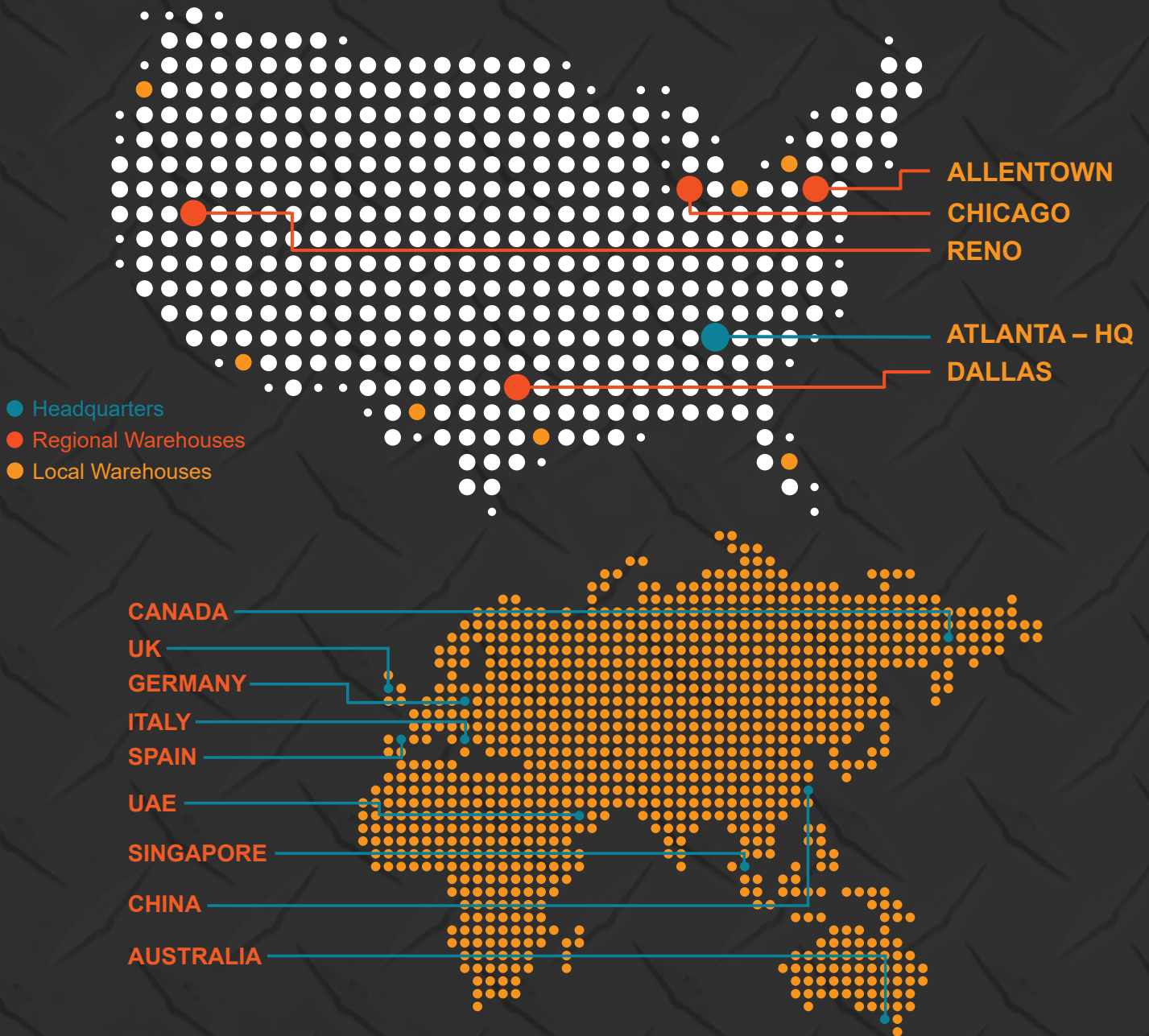


90 Degree Rotatable Box





Locations



Versatility: Like the Chameleon of the motor industry, Techttop motors are designed to be versatile and configurable to fit comfortably into many environments and applications. Our removable foot configuration allows simple conversion to F1, F2, F3 and round body. Our dual oversized cast iron bearing locks, inner retainer seals, face drains and bearing retention rings allow for mounting and operation in any position. Our standard winding tropicalization, inverter duty insulation system and our IP55 rating allows the motor to enjoy a long operating life in a wide range of environments. Techttop's motor is a true General Purpose motor with the features, benefits and performance to back it up.

Locations: Wherever you are and wherever our motors end up, Techttop is never far away. Techttop warehouses are popping up all over the US and Canada, and with distribution in 6 continents wherever you need us, we will be there.



Techtop Motors Family

**Green Line
Cast Iron**
1–300 HP
2, 4 & 6 Poles
NEMA 143T–449T
IEC 90-280
Inverter Rated
(MG1 Part 15:1
Constant Torque)



**Green Line
Aluminum**
1–30 HP
2, 4 & 6 Poles
NEMA 143T–280T
IEC 90-180
Inverter Rated
(MG1 Part 15:1
Constant Torque)



**Green Line IEC
Cast Iron & Aluminum**
.12–150 HP
2, 4, 6 & 8 Poles
NEMA 56–280
IEC 80-180
Inverter Rated
(MG1 Part 15:1
Constant Torque)



Green Line ODP
1–150 HP
2 & 4 Poles
NEMA 143T–445T
IEC 90-140
Inverter Rated
(MG1 Part 15:1
Constant Torque)



**Pump Line
Cast Iron & Aluminum**
1/3–75 HP
2 & 4 Poles
NEMA 56J–326T
IEC 80-200
Inverter Rated
(MG1 Part 31–20:1
Variable Torque)



**Cobra Line
Aluminum**
1/3–3 HP
2 & 4 Poles
NEMA 56C
IEC 80
Inverter Rated
(MG1 Part 31–15:1
Constant Torque)





**Red Line
Farm Duty**
1/3–10 HP
4 Poles
56–215T
Single Phase
High Torque



Cooling Tower
5–60 HP
NEMA 184T–326T
IEC 112–200
Inverter Rated
(MG1 Part 31–1000:1
Variable Torque)

**Orange Line
Crusher Duty**
75–300 HP
4 & 6 Poles
NEMA 365T–449T
IEC 225–280
Roller Bearing



**White Line
Washdown Duty**
1/3–15 HP
2, 4 & 6 Poles
NEMA 56C–215T
IEC 80–132
Inverter Rated
(15:1 Constant Torque)



**Pump Line
Oil Pumper Design D**
Cast Iron
3–125 HP
6 Poles
NEMA 213T–445T
IEC 132–280



Magnet DC Steel
TEFC & TENV
1/8–3 HP
63B14–145TC
SCR Rated
(20:1 Constant Torque)

Phase Converter
Cast Iron
3–75 HP
4 Poles
3 Lead–230V
12 Lead–230/460V



Stainless Steel 56C
TEFC & TENV
1/3–3 HP
2 & 4 Poles
IP69K
Fully Encapsulated
Food Grade



Call: 678-436-5540
Toll Free: 1-855-TECHTOP
Fax: 866-204-1498
Email: info@techttopind.com
Web: www.techttopind.com



Techtop Industries Inc. | 2815 Colonnades Court | Peachtree Corners, GA 30071 | www.techtopynd.com