



TECHTOP

electric motors



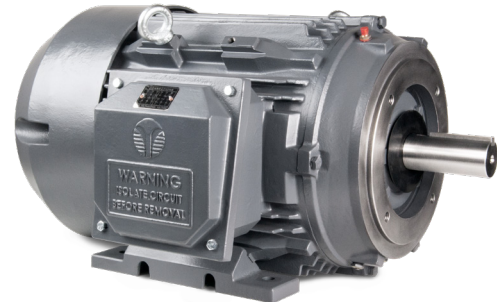
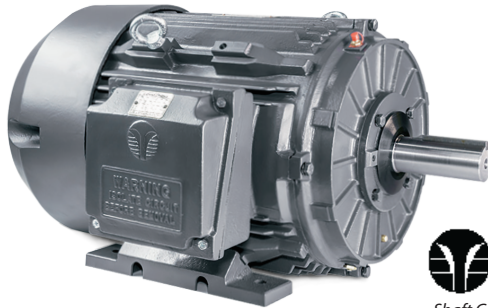
MOTOR CATALOG



HP: 1–500
Pole: 2,4,6

Frame: 143T– 449T
Volt: 208-230/460V

RPM: 3600,1800,1200
Body: T,TC



STANDARD FEATURES

- NEMA Premium Energy Efficiency Design
- MG1 Part 31 Compliant for VFD use (15:1 CT)
- 2-Part Epoxy Coating - IP 55 Ingress Protection
- 1045 Steel Shaft (through 326T), 4140 (326T & up)
- Multi-mount Frame Design up to 360T (F1,F2,F0)
- Auto-purge Brass Condensation Drains
- 1.25 Service Factor to 50HP (1.15 for larger frames)
- DE and ODE Oversized Bearing Size
- Zerk fitting Regreasable Bearings 254T & Larger
- 90° Rotatable - Full Rubber Gasket Conduit Box
- Double Lip Shaft Seal Protection on DE & ODE



- VPI-Tropicalized- Lap-wound-Class H Stator
- Heavy Duty Cast Iron Fan Cover
- Oversized-Color Coded -Tagged - Class F Leads
- Rubber Shaft Slinger for Vertical Application
- Interchangeable C & D Flanges Available
- Class 1, Div 2, Groups A, B, C & D Certified*
- EISA Regulation Compliant
- 40°C Ambient Temperature Rating
- 36 Month Warranty from Purchase Date
- Arc Arrestor Shaft Grounding (GX3 Only)
- ODE Hybrid Ceramic Bearings (GX3 Only)

HP	Sync. Speed	Model Number	List Price	
			Rigid Base	C-Face
1	3600	GR3-CI-TF-143T-2-B-D-1	\$422	\$474
	1800	GR3-CI-TF-143T-4-B-D-1	\$422	\$474
	1200	GR3-CI-TF-145T-6-B-D-1	\$475	\$527
1.5	3600	GR3-CI-TF-143T-2-B-D-1.5	\$444	\$496
	1800	GR3-CI-TF-145T-4-B-D-1.5	\$459	\$511
	1200	GR3-CI-TF-182T-6-B-D-1.5	\$560	\$664
2	3600	GR3-CI-TF-145T-2-B-D-2	\$492	\$544
	1800	GR3-CI-TF-145T-4-B-D-2	\$491	\$543
	1200	GR3-CI-TF-184T-6-B-D-2	\$656	\$760
3	3600	GR3-CI-TF-182T-2-B-D-3	\$651	\$755
	1800	GR3-CI-TF-182T-4-B-D-3	\$639	\$743
	1200	GR3-CI-TF-213T-6-B-D-3	\$901	\$1,034
5	3600	GR3-CI-TF-184T-2-B-D-5	\$714	\$818
	1800	GR3-CI-TF-184T-4-B-D-5	\$721	\$825
	1200	GR3-CI-TF-215T-6-B-D-5	\$1,175	\$1,308

HP	Sync. Speed	Model Number	List Price	
			Rigid Base	C-Face
7.5	3600	GR3-CI-TF-213T-2-B-D-7.5	\$1,003	\$1,136
	1800	GR3-CI-TF-213T-4-B-D-7.5	\$1,017	\$1,150
	1200	GR3-CI-TF-254T-6-BR-D-7.5	\$1,463	\$1,613
10	3600	GR3-CI-TF-215T-2-B-D-10	\$1,150	\$1,283
	1800	GR3-CI-TF-215T-4-B-D-10	\$1,163	\$1,296
	1200	GR3-CI-TF-256T-6-BR-D-10	\$1,900	\$2,050
15	3600	GR3-CI-TF-254T-2-BR-D-15	\$1,679	\$1,829
	1800	GR3-CI-TF-254T-4-BR-D-15	\$1,682	\$1,832
	1200	GR3-CI-TF-284T-6-BR-D-15	\$2,376	\$2,569
20	3600	GR3-CI-TF-256T-2-BR-D-20	\$1,951	\$2,101
	1800	GR3-CI-TF-256T-4-BR-D-20	\$1,970	\$2,120
	1200	GR3-CI-TF-286T-6-BR-D-20	\$2,716	\$2,909
25	3600	GR3-CI-TF-284T-2-BR-D-25	\$2,325	\$2,518
	1800	GR3-CI-TF-284T-4-BR-D-25	\$2,352	\$2,545
	1200	GR3-CI-TF-324T-6-BR-D-25	\$3,576	\$3,859

* GX3 models (highlighted gray) require removal of internal Grounding Brush. Note requirement on your order. Multiplier Code: G1

Continued on back

TEFC-CAST IRON LIST PRICE

HP	Sync. Speed	Model Number	List Price	
			Rigid Base	C-Face
30	3600	GR3-CI-TF-286TS-2-BR-D-30	\$2,780	\$2,973
	1800	GR3-CI-TF-286T-4-BR-D-30	\$2,772	\$2,965
	1200	GR3-CI-TF-326T-6-BR-D-30	\$4,145	\$4,428
40	3600	GR3-CI-TF-324TS-2-BR-D-40	\$3,535	\$3,818
	1800	GR3-CI-TF-324T-4-BR-D-40	\$3,626	\$3,909
	1200	GR3-CI-TF-364T-6-BR-D-40	\$4,980	\$5,374
50	3600	GR3-CI-TF-326TS-2-BR-D-50	\$4,168	\$4,451
	1800	GR3-CI-TF-326T-4-BR-D-50	\$4,314	\$4,597
	1200	GR3-CI-TF-365T-6-BR-D-50	\$6,242	\$6,636
60	3600	GR3-CI-TF-364TS-2-BR-D-60	\$5,739	\$6,133
	1800	GR3-CI-TF-364T-4-BR-D-60	\$5,747	\$6,141
	1200	GR3-CI-TF-404T-6-RR-D-60	\$7,355	
75	3600	GR3-CI-TF-365TS-2-BR-D-75	\$6,685	\$7,079
	1800	GR3-CI-TF-365T-4-BR-D-75	\$6,801	\$7,195
	1800	GR3-CI-TF-365T-4-RR-D-75	\$6,801	
	1200	GR3-CI-TF-405T-6-RR-D-75	\$7,978	
100	3600	GR3-CI-TF-405TS-2-BR-D-100	\$8,130	\$8,624
	1800	GR3-CI-TF-405T-4-BR-D-100	\$8,168	\$8,662
	1800	GR3-CI-TF-405T-4-RR-D-100	\$8,168	
	1200	GR3-CI-TF-444T-6-RR-D-100	\$12,373	
125	3600	GR3-CI-TF-444TS-2-BR-E-125	\$12,345	\$12,966
	1800	GR3-CI-TF-444T-4-BR-E-125	\$12,417	\$13,038
	1800	GR3-CI-TF-444T-4-RR-E-125	\$12,417	
	1200	GR3-CI-TF-445T-6-RR-E-125	\$13,665	

HP	Sync. Speed	Model Number	List Price	
			Rigid Base	C-Face
150	3600	GR3-CI-TF-445TS-2-BR-E-150	\$14,725	\$15,346
	1800	GR3-CI-TF-445T-4-BR-E-150	\$14,845	\$15,466
	1800	GR3-CI-TF-445T-4-RR-E-150	\$14,845	
	1200	GR3-CI-TF-447T-6-RR-E-150	\$17,273	
200	3600	GR3-CI-TF-447TS-2-BR-E-200	\$17,701	\$18,322
	1800	GR3-CI-TF-447T-4-BR-E-200	\$18,559	\$19,180
	1800	GR3-CI-TF-447T-4-RR-E-200	\$18,859	
250	1200	GR3-CI-TF-449T-6-RR-E-200	\$21,594	
	3600	GR3-CI-TF-449TS-2-BR-E-250	\$20,086	
	1800	GR3-CI-TF-449T-4-BR-E-250	\$21,060	\$21,860
300	1800	GR3-CI-TF-449T-4-RR-E-250	\$21,360	\$21,860
	1200	GX3-CI-TF-449T-6-RR-E-250	\$31,801	
	3600	GX3-CI-TF-449TS-2-BR-E-300	\$27,300	\$28,133
	1800	GR3-CI-TF-449T-4-BR-E-300	\$25,560	\$26,360
350	1800	GR3-CI-TF-449T-4-RR-E-300	\$25,960	
	1200	GX3-CI-TF-449TL-6-RR-E-300	\$35,357	\$36,190
	3600	GX3-CI-TF-449TS-2-BR-E-350	\$30,728	\$31,561
	1800	GX3-CI-TF-449T-4-RR-E-350	\$35,678	\$36,511
400	1200	GX3-CI-TF-449T-6-RR-E-350	\$40,163	\$40,996
	3600	GX3-CI-TF-449TS-2-BR-E-400	\$34,440	\$35,273
	1800	GX3-CI-TF-449T-4-RR-E-400	\$41,331	\$42,164
450	3600	GX3-CI-TF-449TS-2-BR-E-450	\$36,525	\$37,358
	1800	GX3-CI-TF-449T-4-RR-E-450	\$43,911	\$44,744
500	3600	GX3-CI-TF-449TS-2-BR-E-500	\$38,670	\$39,503
	1800	GX3-CI-TF-449T-4-RR-E-500	\$46,054	\$46,887

MOTOR MODIFICATIONS

Mod. Model # + Frame Adder	Description	Frame Sizes (List Price)										
		NEMA	143/5T	182/4T	213/5T	254/6T	284/6T	324/6T	364/5T	404/5T	444/5T	447/9T
		IEC	90	100/12	132	160	180	200	225	250	280	
MODFGADT	C-Face Adaption + Kit		\$384	\$384	\$384	\$384	\$384	\$489	\$489	\$489	\$489	\$768
MODTB	Terminal Blocks (6 Post)		\$111	\$127	\$175	\$206	\$206	\$286	\$286	\$333	\$333	\$768
MODF2F3	F-1 to F-2 Conversion		\$384	\$384	\$384	\$384	\$384	\$489	\$489	\$960	\$960	\$960
MODTFCAO	TEFC to TEAO Conversion		\$349	\$349	\$349	\$431	\$431	\$512	\$605	\$861	\$1,048	\$1,048
MODCT	TEFC to TEAO Cooling Tower		\$590	\$617	\$644	\$753	\$780	\$888	\$1,008	\$1,292	\$1,505	\$1,532
MODTS	Shaft Reduction T to TS		\$1,498	\$1,498	\$1,498	\$1,498	\$1,498	\$1,711	\$1,711	\$1,711	\$1,997	\$1,997
MODSH	Space Heaters		\$482	\$482	\$482	\$482	\$482	\$576	\$576	\$670	\$716	\$716
		40W	40W	40W	60W	60W	80W	80W	100W	120W	120W	
MODRLR	Ball to Roller Bearing		\$1,100	\$978	\$1,117	\$1,117	\$1,362	\$1,589	\$1,868	\$1,990	\$3,457	\$3,457
MODBALL	Roller to Ball Bearing		\$437	\$506	\$541	\$576	\$768	\$908	\$1,100	\$1,240	\$1,816	\$1,816
MODWTS	Winding Thermostats		\$541	\$541	\$541	\$632	\$653	\$768	\$768	\$904	\$999	\$999
MODPTC	Winding PTC		\$541	\$541	\$541	\$632	\$653	\$768	\$768	\$904	\$999	\$999
MODWTRTD	Winding RTDs		\$953	\$953	\$953	\$1,076	\$1,076	\$1,212	\$1,212	\$1,344	\$1,393	\$1,393
MODBRTD	Bearing RTDs		\$953	\$953	\$953	\$1,076	\$1,076	\$1,212	\$1,212	\$1,344	\$1,393	\$1,393
MODWD	Washdown Conversion		\$622	\$676	\$730	\$817	\$871	\$957	\$1,048	\$1,205	\$1,333	\$1,387
MODINPRO	Drive End Inpro-Seal install		N/A	N/A	N/A	\$1,425	\$1,393	\$1,517	\$1,647	\$2,024	\$2,402	\$2,780
MODCOAT	Repainting motor(Epoxy or Poly)		\$381	\$408	\$435	\$494	\$521	\$581	\$645	\$775	\$876	\$903
	Frame Adder:		143/5	182/4	213/5	254/6	284/6	324/6	364/5	404/5	444/5	447/9

Lift Strap

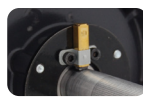


included with 254T & Larger



ALUMINUM SERIES

1/3 - 3 HP, Premium Efficient, Three Phase (TEFC)



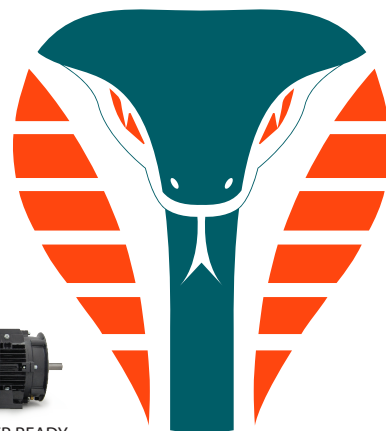
✓ SHAFT GROUNDING



✓ BRAKE READY



✓ ENCODER READY



SPECIFICATIONS

Basic Specifications

- NEMA Premium Efficiency
- Power Ratings from 0.33 to 3 HP
- Three Phase, 2 and 4 Pole
- 60 Hz (50 Hz Capable)
- 230/460V 60 Hz (Usable @ 208V)
- Totally Enclosed Fan Cooled (TEFC)

Operating Parameters

- Continuous (S1) Duty
- Ambient Temperatures up to 40°C
- Installation up to 3300ft

Ingress Protection

- IP 55

Inverter and Insulation Rating

- Inverter Rated 15:1 Constant Torque (1.0 S.F. on VFD Power) per NEMA MG 1 Part 31
- Class F Insulation
- Designed to Class B temperature rise
- Vacuum Pressure Impregnated Stator



MOTOR FEATURES

Motor Features

- Shaft Grounding Brush Installed
- Fully Epoxy Potted Conduit Box Entry
- Stainless Steel Anti-Corrosion Fan Cover
- Brake Kit Ready, Encoder installation available
- PTC Thermal Protection Installed
- Multi-mount Removable feet F1, F2, F0 convertible
- 1.25 Service Factor with 60Hz TEFC operation
- Conduit Box 90° rotatable
- Full Die-Cast Aluminum Frame
- Anti-microbial (tropicalization) coating on stator
- Over sized shielded bearings

- Viton Double Lip Shaft Seal
- TENV Capable at 1.0 SF
- 1045 steel shaft
- Stainless steel nameplate
- Corrosion resistant Blue Zinc hardware
- Class 1, Division II, Groups A, B, C and D Compliant*

Surface Finish

- Powder Coated RAL7024 - Graphite Gray

Warranty

- 36 Months from date of purchase

* Requires removal of internal Grounding Brush. Note requirement on your order.

COBRA Line Aluminum Series

1/3 - 3 HP, Premium Efficient, Three Phase (TEFC)



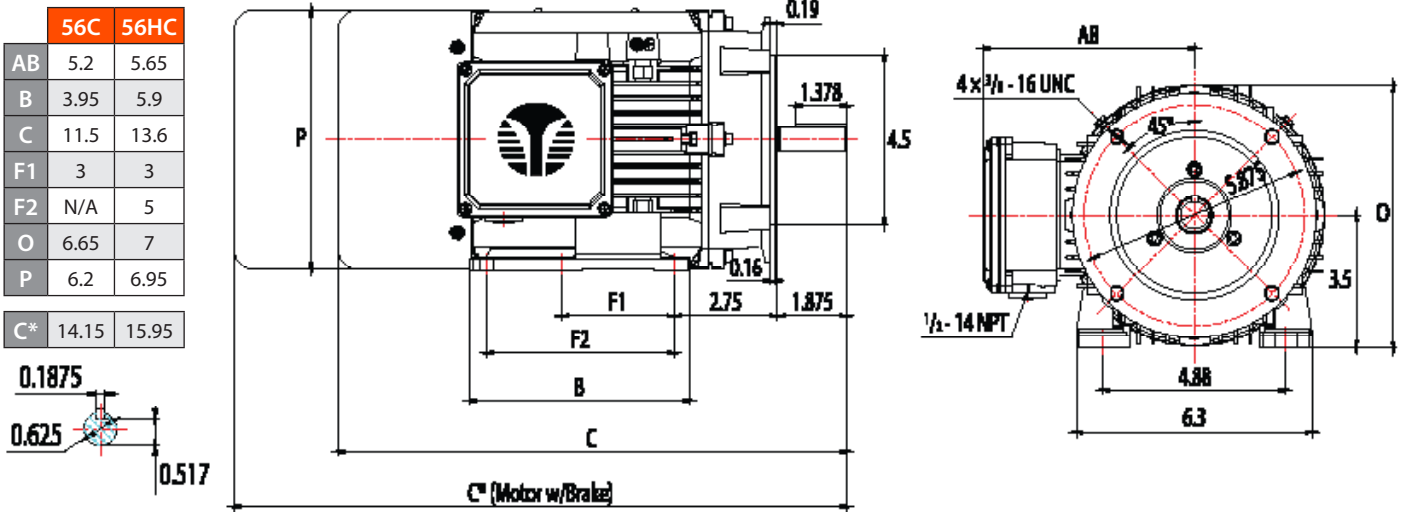
PURCHASING DATA

HP	Model	Sync. RPM	NEMA Frame	Full Load Eff. (%)	Encl.	Weight (lbs.)	"C" Dim. Inches	List Price	
								Rigid	C-Face
1/3	CB3-AL-TF-56C-2-B-D-.33	3600	56C	72	TEFC	14.9	11.5	—	\$318
	CB3-AL-TF-56C-4-B-D-.33	1800	56C	74	TEFC	15.8	11.5	—	\$309
1/2	CB3-AL-TF-56C-2-B-D-.5	3600	56C	74	TEFC	15.5	11.5	—	\$334
	CB3-AL-TF-56C-4-B-D-.5	1800	56C	78.5	TEFC	17.7	11.5	—	\$325
3/4	CB3-AL-TF-56C-2-B-D-.75	3600	56C	77	TEFC	17.1	11.5	—	\$356
	CB3-AL-TF-56C-4-B-D-.75	1800	56C	78.5	TEFC	20.2	11.5	—	\$353
1	CB3-AL-TF-56C-2-B-D-1	3600	56C	79	TEFC	18.2	11.5	—	\$373
	CB3-AL-TF-56C-4-B-D-1	1800	56C	85	TEFC	25.7	11.5	—	\$399
1.5	CB3-AL-TF-56C-2-B-D-1.5	3600	56C	84	TEFC	24.1	11.5	—	\$390
	CB3-AL-TF-56HC-4-B-D-1.5	1800	56C	86.5	TEFC	34.5	13.6	—	\$501
2	CB3-AL-TF-56C-2-B-D-2	3600	56C	85.5	TEFC	26.5	11.5	—	\$416
	CB3-AL-TF-56HC-4-B-D-2	1800	56C	85.5	TEFC	39.5	13.6	—	\$548
3	CB3-AL-TF-56HC-2-B-D-3	3600	56C	86.5	TEFC	38.0	13.6	—	\$578

Multiplier Code: CB

*Call for models not listed.

COBRA DIMENSIONS



BRAKE KITS

Spring-applied Electromagnetic Brakes

- Spring-applied and dry-friction electromagnetic Brakes
- Release when energized and Braking when power cut off
- Kit includes: Brake, Rectifier, Chrome Fan Cover, Shaft Extension



Size	NEMA Frame	Holding Torque	6 Pole Full Wave Rectifier Voltage	List Price	
				Kit	Installed
BRK56-12-VVV	56	12 NM (8.85 ft-lbs)	*230=208V/230V 460=460V 575=575V	\$365	\$650
BRK56H/140-23-VVV	56H/140T	23 NM (16.96 ft-lbs)		\$450	\$735

"VVV" = AC Voltage Input
* = Ship Standard



SINGLE PHASE ALUMINUM

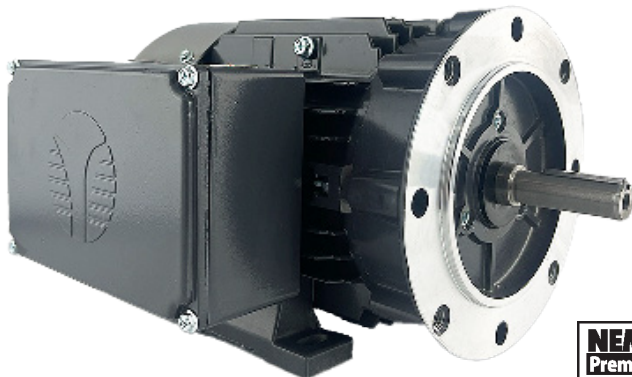
HP: 1/3-2

Frame: 56C, 56HC

Pole: 2, 4

Volt: 115/208-230

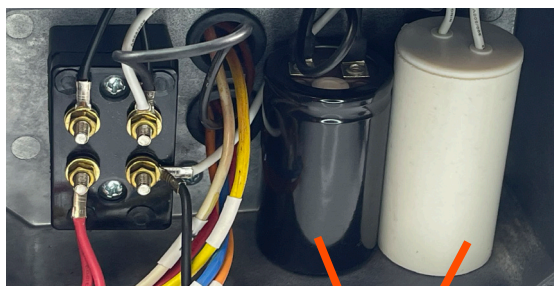
RPM: 1800, 3600



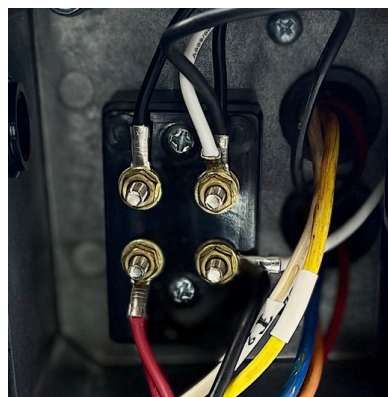
MOTOR FEATURES

- NEMA Premium Efficiency
- IP55
- High Efficiency Dual Cap Design
- Solid State Start Switch
- Stainless Steel Anit-Corrosion Fan Cover
- Brake Kit Ready, Encoder Installation available**
- Multi-mount Removable feet F1,F2,F3 convertible
- 1.15 Service Factor with 60Hz TEFC operation
- Die-Cast Aluminum Frame
- Anti-microbial (tropicalization) coating on stator
- Over sized shielded bearings
- Viton Double Lip Shaft Seal
- 1045 steel shaft
- Stainless steel nameplate
- Corrosion resistant Blue Zinc hardware
- Powder Coated RAL7024 - Graphite Gray
- 18 Month Warranty from date of purchase
- Vacuum Impregnated (VPI) Stator

SOLID STATE START SWITCH



High Efficiency Dual Cap Design



Eliminating common failures found in single phase Mechanical switches

** Contact Techttop for more details

COBRA Line Single Phase Aluminum Series



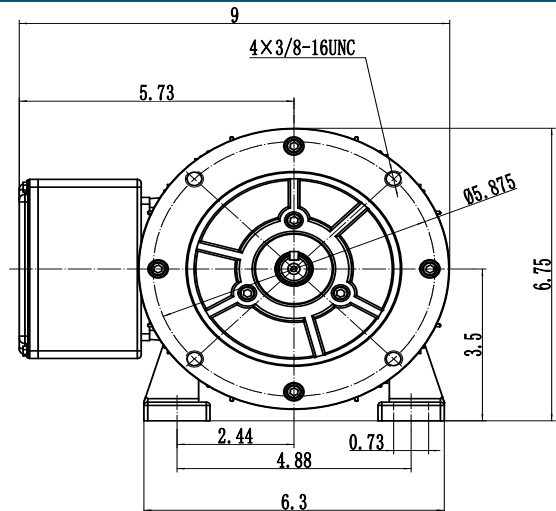
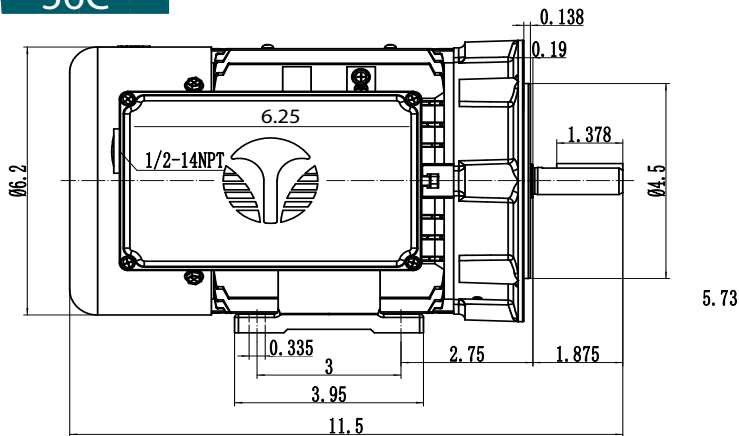
PURCHASING DATA

HP	Model	Sync. RPM	NEMA Frame	Encl.	Weight (lbs.)	"C" Dim. Inches	List Price
1/3	CB1-AL-TF-56C-2-B-C-.33	3600	56C	TEFC	14.9	11.5	\$385
	CB1-AL-TF-56C-4-B-C-.33	1800	56C	TEFC	15.8	11.5	\$363
1/2	CB1-AL-TF-56C-2-B-C-.5	3600	56C	TEFC	15.5	11.5	\$402
	CB1-AL-TF-56C-4-B-C-.5	1800	56C	TEFC	17.7	11.5	\$412
3/4	CB1-AL-TF-56C-2-B-C-.75	3600	56C	TEFC	17.1	11.5	\$446
	CB1-AL-TF-56C-4-B-C-.75	1800	56C	TEFC	20.2	11.5	\$459
1	CB1-AL-TF-56C-2-B-C-1	3600	56C	TEFC	18.2	11.5	\$451
	CB1-AL-TF-56C-4-B-C-1	1800	56C	TEFC	25.7	11.5	\$486
1.5	CB1-AL-TF-56C-2-B-C-1.5	3600	56C	TEFC	24.1	11.5	\$478
	CB1-AL-TF-56HC-4-B-C-1.5	1800	56C	TEFC	34.5	13.6	\$608
2	CB1-AL-TF-56HC-2-B-C-2	3600	56C	TEFC	26.5	11.5	\$577
	CB1-AL-TF-56HC-4-B-C-2	1800	56C	TEFC	39.5	13.6	\$649

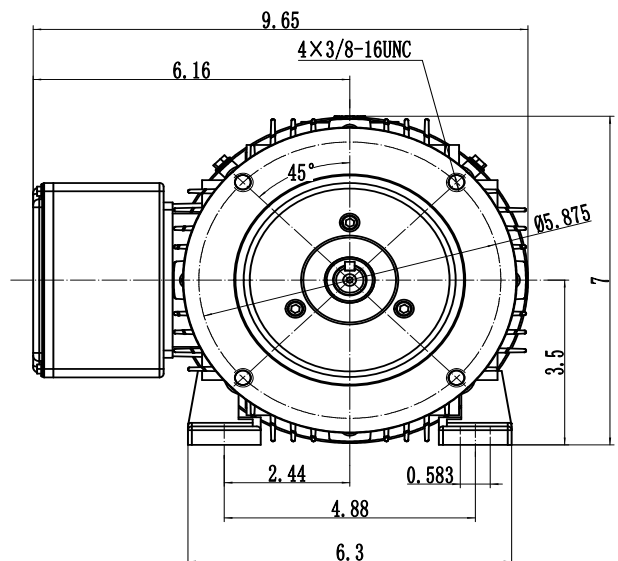
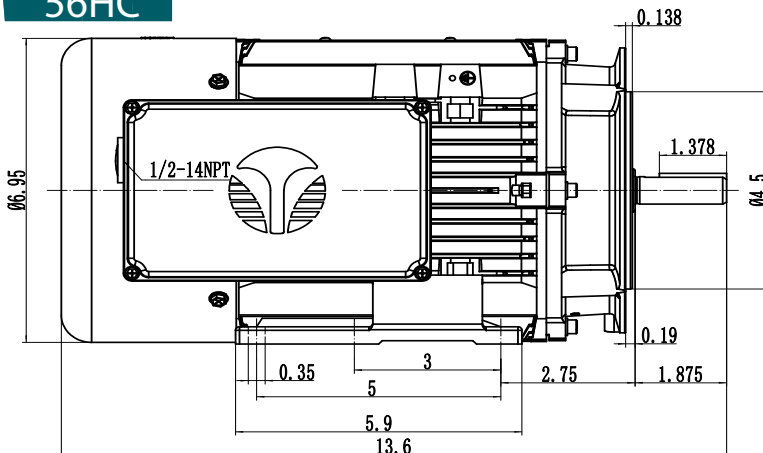
Multiplier Code: CB

COBRA DIMENSIONS

56C



56HC



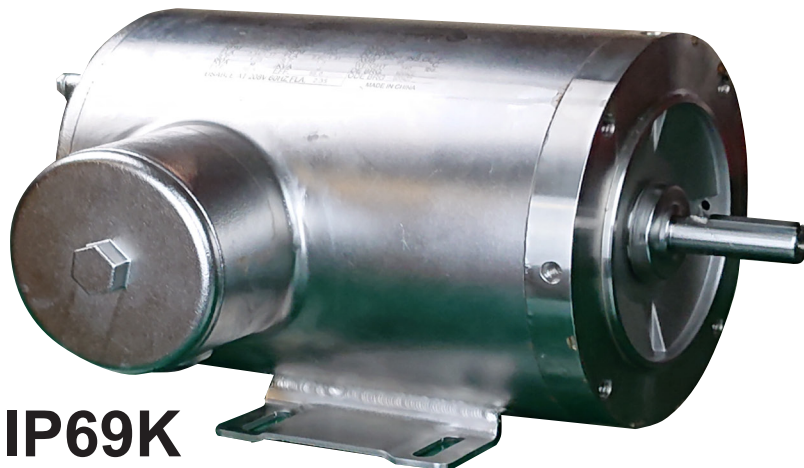


WASHDOWN DUTY

HP: 1/2– 2 Frame: 56C , 56HC RPM: 1800 , 3600
 Pole: 2 , 4 Volt: 230/460V Round and Footed

STANDARD FEATURES

- NEMA Premium Efficiency
- 1.15 Service Factor
- Inverter Rated 20:1 VT, 4:1 CT
- Fully Encapsulated Windings
- Semipermeable Pressure Vent
- Food Grade / BISCC Certified
- Vacuum Impregnated (VPI) Stator
- 24 Month Warranty



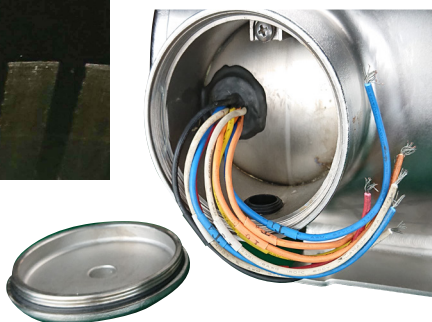
IP69K

HP	Sync.	TENV		TENV Round Body		TEFC		TEFC Round Body	
		Model Number	LIST	Model Number	LIST	Model Number	LIST	Model Number	LIST
0.5	3600	SS3-TN-56C-2-D-0.5	847	SS3-TN-56C-2-D-0.5-RND	847				
	1800	SS3-TN-56C-4-D-0.5	939	SS3-TN-56C-4-D-0.5-RND	939	SS3-TF-56C-4-D-0.5	924	SS3-TF-56C-4-D-0.5-RND	924
0.75	3600	SS3-TN-56C-2-D-0.75	893	SS3-TN-56C-2-D-0.75-RND	893				
	1800	SS3-TN-56C-4-D-0.75	985	SS3-TN-56C-4-D-0.75-RND	985	SS3-TF-56C-4-D-0.75	954	SS3-TF-56C-4-D-0.75-RND	954
1	3600	SS3-TN-56HC-2-D-1	939	SS3-TN-56C-2-D-1-RND	939				
	1800	SS3-TN-56HC-4-D-1	1031	SS3-TN-56C-4-D-1-RND	1031	SS3-TF-56HC-4-D-1	1000	SS3-TF-56C-4-D-1-RND	1000
1.5	1800					SS3-TF-56HC-4-D-1.5	1077	SS3-TF-56C-4-D-1.5-RND	1077
2	1800					SS3-TF-56HC-4-D-2	1216	SS3-TF-56C-4-D-2-RND	1216

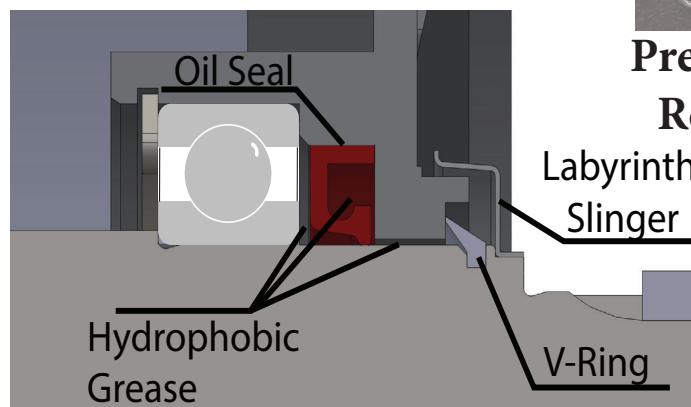
Multiplier Code: SS



Fully Encapsulated Winding and Junction Box.



Color Coded Lead Wires



IP69K Ingress Protection

Pressure Relief





HP: 1–30

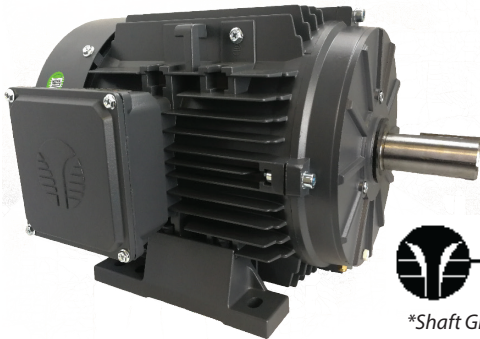
Pole: 2/4/6

Frame: 143T–286T

3Φ Volt: 230/460V

RPM: 3600/1800/1200

Encl: (TEFC) IP 55



STANDARD FEATURES

- NEMA Premium Efficiency
- Dual Voltage - Three Phase 230/460V
- 3600/1800/1200 RPM - 2/4/6 Pole
- Inverter Duty -15:1 Constant Torque (MG1 Part 31)
- Totally Enclosed Fan Cooled IP 55 Protection
- VPI Lap wound Stator with Anti-fungal Coating
- Double Lip Oil Seal on DE & ODE
- Internal Shaft Grounding Brush
- 1.25 SF - 143T and Up
- 50 Hz Capable at 1.0 SF
- 40° C Ambient Temperature Rating
- 1045 Carbon Steel Shaft
- Multi-mount Frame with Removable Feet
- Oversized Drive End Bearing
- One-Way Brass Condensation Drains
- Aluminum Conduit Box 90° Rotatable
- Class F Insulation System with Class H Stator
- F1, F2, F3 Box Position Convertible (Shipped F1)
- Class 1, Division 2, Group C & D Compliant*
- Installation up to 3300 ft Altitude
- 36 Month Warranty from Purchase Date
- Marine Duty Compliant

* Requires removal of internal Grounding Brush. Note requirement on your order.

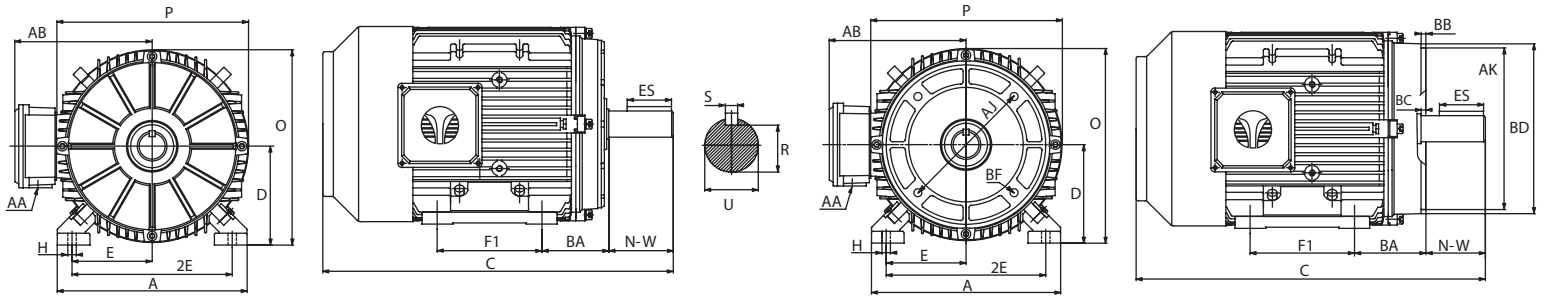


HP	Sync Speed	Model No.	List Price	
			Rigid Base	C-Face
1	3600	GX3-AL-TF-143T-2-B-D-1	\$430	\$483
	1800	GX3-AL-TF-143T-4-B-D-1	\$430	\$483
	1200	GX3-AL-TF-145T-6-B-D-1	\$499	\$538
1.5	3600	GX3-AL-TF-143T-2-B-D-1.5	\$453	\$506
	1800	GX3-AL-TF-145T-4-B-D-1.5	\$468	\$521
2	1200	GX3-AL-TF-182T-6-B-D-1.5	\$682	\$762
	3600	GX3-AL-TF-145T-2-B-D-2	\$502	\$555
	1800	GX3-AL-TF-145T-4-B-D-2	\$501	\$554
3	1200	GX3-AL-TF-184T-6-B-D-2	\$785	\$850
	3600	GX3-AL-TF-182T-2-B-D-3	\$684	\$770
5	1800	GX3-AL-TF-182T-4-B-D-3	\$671	\$758
	1200	GX3-AL-TF-213T-6-B-D-3	\$991	\$1,086
	3600	GX3-AL-TF-184T-2-B-D-5	\$750	\$834
7.5	1800	GX3-AL-TF-184T-4-B-D-5	\$757	\$842
	1200	GX3-AL-TF-215T-6-B-D-5	\$1,293	\$1,373
	3600	GX3-AL-TF-213T-2-B-D-7.5	\$1,023	\$1,159
10	1800	GX3-AL-TF-213T-4-B-D-7.5	\$1,068	\$1,173
	1200	GX3-AL-TF-254T-6-B-D-7.5	\$1,536	\$1,694
	3600	GX3-AL-TF-215T-2-B-D-10	\$1,173	\$1,309
15	1800	GX3-AL-TF-215T-4-B-D-10	\$1,221	\$1,361
	1200	GX3-AL-TF-256T-6-BR-D-10	\$1,995	\$2,153
	3600	GX3-AL-TF-215T-2-B-D-15	\$1,791	\$1,862
20	3600	GX3-AL-TF-254T-2-B-D-15	\$1,763	\$1,920
	1800	GX3-AL-TF-254T-4-B-D-15	\$1,766	\$1,924
	1200	GX3-AL-TF-284T-6-B-D-15	\$2,495	\$2,697
25	3600	GX3-AL-TF-256T-2-B-D-20	\$2,049	\$2,206
	1800	GX3-AL-TF-256T-4-B-D-20	\$2,069	\$2,226
	1200	GX3-AL-TF-286T-6-B-D-20	\$2,852	\$3,054
30	3600	GX3-AL-TF-284T-2-B-D-25	\$2,441	\$2,644
	1800	GX3-AL-TF-284T-4-B-D-25	\$2,470	\$2,672
30	3600	GX3-AL-TF-286TS-2-B-D-30	\$2,919	\$3,122
	1800	GX3-AL-TF-286T-4-B-D-30	\$2,911	\$3,113

Continued on back

MOTOR MODIFICATIONS

Mod. Model # + Frame Adder	Description	Frame Sizes (List Price)			
		182T	213T	254T	284T
		184T	215T	256T	286T
MODFGADT	C-Face Adaption + Kit	\$384	\$384	\$384	\$384
MODTB	Terminal Blocks (6 Post)	\$127	\$175	\$206	\$206
MODF2F3	F-1 to F-2 Conversion	\$384	\$384	\$384	\$384
MODTFCAO	TEFC to TEAO Conversion	\$349	\$349	\$431	\$431
MODCT	TEFC to TEAO Cooling Tower	\$617	\$644	\$753	\$780
MODTS	Shaft Reduction T to TS	\$1,498	\$1,498	\$1,498	\$1,498
MODSH	Space Heaters	\$482	\$482	\$482	\$482
		40W	40W	60W	60W
MODWTS	Winding Thermostats	\$541	\$541	\$632	\$653
MODCOAT	Repainting motor(Epoxy or Poly)	\$408	\$435	\$494	\$521
Frame Adder:		182/4	213/5	254/6	284/6



Frame	A	AA	AB	AJ	AK	BA	BB	BC	BF	C	D	E	ES	2E	F1	F2	H	O	P	R	S	U	N-W	
143T				---	---		---	---	---															
143TC	6.9	3/4	5.65	5.875	4.5	2.25	0.16	0.125	4 x 3/8	13.7	3.5	2.75	1.41	5.5	4	5	0.59	7	6.9	0.771	0.188	0.875	2.25	
145T				---	---		---	---	---															
145TC				5.875	4.5		0.16	0.125	4 x 3/8															
182T				---	---		---	---	---									8.85						
182TC	8.85	3/4	6.6	7.25	8.5	2.75	0.25	0.12	4 x 1/2	16.1	4.5	3.75	1.78	7.5	4.5	5.5	0.63	9	8.85	0.986	0.25	1.125	2.75	
184T				---	---		---	---	---									8.85						
184TC				7.25	8.5		0.25	0.12	4 x 1/2									9						
213T				---	---		---	---	---															
213TC	10.3	1.0	7.4	7.25	8.5	3.5	0.25	0.25	4 x 1/2	19	5.25	4.25	2.41	8.5	5.5	7	0.63	10.4	10.3	1.201	0.312	1.375	3.38	
215T				---	---		---	---	---															
215TC				7.25	8.5		0.25	0.25	4 x 1/2															
254T				---	---		---	---	---	24					8.25	10								
254TC	12.4	1 1/4	8.82	7.25	12.5	4.25	0.25	---	4 x 1/2	---	6.25	5	2.91	10			0.83	12.5	12.4	1.416	0.375	1.625	4	
256T				---	---		---	---	---	25.8					10.25	12								
256TC				7.25	12.5		0.25	---	4 x 1/2	---														
284T				---	---		---	---	---									0.985						
284TC	13.4	1 1/2	11.3	---	10.5	4.75	0.25	---	4 x 1/2	29.3	7	5.5	3.28	11	9.5	11		0.984	14.1	13.4	1.591	0.5	1.875	4.62
286T				---	---		---	---	---															
286TC				---	10.5		0.25	---	4 x 1/2															



HP: .12-150
Pole: 2/4/6/8

Frame: 56-280
Volt: 208-230/460V

RPM: 1200/1800/3600
kW: 0.09-110



STANDARD FEATURES



- IP 55 Rated Ingress Protection
- Inverter Rated-15:1 Constant Torque (MG1 Part 31)
- Double Lip Bearing Seal on DE & ODE
- VPI Lap Wound Stator with Tropicalization
- Dual Oversized Bearing on DE & ODE
- Multi-mount Removable Feet
- Corrosion Resistant Hardware
- Rubber Slinger Protection on Drive End
- Conduit Box is 90° Rotatable
- Zerk Regreasable Bearings 160 Frame & Larger
- F1, F2, F3 Field Convertible
- Class H Insulated Stator with Class F Leads
- Terminal Blocks between Conduit Box & Body
- Increase & Decrease Flanges Available
- One-Way Brass Condensation Drain on DE & ODE
- Class 1, Division 2, Groups A, B, C & D Compliant
- 36 Month Warranty

KW	HP	Sync RPM	Eff Level	Model Number w/RIGID BASE B3	List Price	Model Number w/RIGID BASE B5 FLANGE	List Price	Model Number w/RIGID BASE B14 FLANGE	List Price
0.09	0.12	1800	IE1	BL3-AL-TF-56B3-4-B-D-.12	\$186	BL3-AL-TF-56B35-4-B-D-.12	\$242	BL3-AL-TF-56B34-4-B-D-.12	\$218
		3600	IE1	BL3-AL-TF-56B3-2-B-D-.18	\$204	BL3-AL-TF-56B35-2-B-D-.18	\$260	BL3-AL-TF-56B34-2-B-D-.18	\$236
0.12	0.18	1800	IE3	GR3-AL-TF-63B3-4-B-D-.18	\$252	GR3-AL-TF-63B35-4-B-D-.18	\$337	GR3-AL-TF-63B34-4-B-D-.18	\$300
		900	IE3	GR3-AL-TF-71B3-8-B-D-.16	\$356	GR3-AL-TF-71B35-8-B-D-.16	\$463	GR3-AL-TF-71B34-8-B-D-.16	\$417
0.18	0.25	3600	IE3	GR3-AL-TF-63B3-2-B-D-.25	\$261	GR3-AL-TF-63B35-2-B-D-.25	\$345	GR3-AL-TF-63B34-2-B-D-.25	\$308
		1800	IE3	GR3-AL-TF-63B3-4-B-D-.25	\$264	GR3-AL-TF-63B35-4-B-D-.25	\$349	GR3-AL-TF-63B34-4-B-D-.25	\$311
0.25	0.35	3600	IE3	GR3-AL-TF-63B3-2-B-D-.35	\$268	GR3-AL-TF-63B35-2-B-D-.35	\$352	GR3-AL-TF-63B34-2-B-D-.35	\$315
		1800	IE3	GR3-AL-TF-63B3-4-B-D-.35	\$287	GR3-AL-TF-63B35-4-B-D-.35	\$372	GR3-AL-TF-63B34-4-B-D-.35	\$334
		1800	IE3	GR3-AL-TF-71B3-4-B-D-.35	\$308	GR3-AL-TF-71B35-4-B-D-.35	\$423	GR3-AL-TF-71B34-4-B-D-.35	\$378
		900	IE3	GR3-AL-TF-80B3-8-B-D-.33	\$515	GR3-AL-TF-80B35-8-B-D-.33	\$670	GR3-AL-TF-80B34-8-B-D-.33	\$603
0.37	0.50	3600	IE3	GR3-AL-TF-63B3-2-B-D-.5	\$283	GR3-AL-TF-63B35-2-B-D-.5	\$368	GR3-AL-TF-63B34-2-B-D-.5	\$330
		3600	IE3	GR3-AL-TF-71B3-2-B-D-.5	\$304	GR3-AL-TF-71B35-2-B-D-.5	\$420	GR3-AL-TF-71B34-2-B-D-.5	\$375
		1800	IE3	GR3-AL-TF-71B3-4-B-D-.5	\$329	GR3-AL-TF-71B35-4-B-D-.5	\$444	GR3-AL-TF-71B34-4-B-D-.5	\$399
		1200	IE3	GR3-AL-TF-71B3-6-B-D-.5	\$440	GR3-AL-TF-71B35-6-B-D-.5	\$571	GR3-AL-TF-71B34-6-B-D-.5	\$515
		1200	IE3	GR3-AL-TF-80B3-6-B-D-.5	\$474	GR3-AL-TF-80B35-6-B-D-.5	\$616	GR3-AL-TF-80B34-6-B-D-.5	\$555
		900	IE3	GR3-AL-TF-80B3-8-B-D-.5	\$585	GR3-AL-TF-80B35-8-B-D-.5	\$761	GR3-AL-TF-80B34-8-B-D-.5	\$684

Continued on back

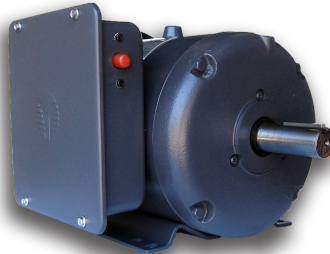
HP: 1/3–10
Pole: 4

Frame: 56–215T
Volt: 115/208–230 (<145T)
208–230 (>182T)

RPM: 1800 (60 Hz)
Body: T/TC/RND



56-145T



182T-215T



AUGER (56Y)

STANDARD FEATURES

- Manual Reset Protectors
- High Efficiency Dual Cap Design
- High Quality Molded Gaskets
- Over 300% Starting Torque

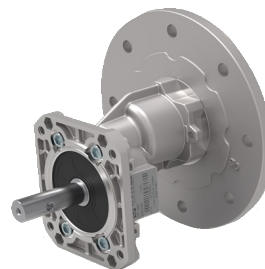
- Cast Iron End Bells
- Dual Oversized Ball Bearings
- Dependable Mechanical Starting Switch
- 18 Month Warranty



HP	Sync Speed	Model Number Rigid Base	List Price	Model Number C-Face with Base	List Price	Model Number C-Face with Round Body	List Price
1/3	1800	RD1-RS-TF-56-4-B-C-.33	\$285	RD1-RS-TF-56C-4-B-C-.33	\$299	RD1-RS-TF-56C-4-B-C-.33-RND	\$292
1/2	1800	RD1-RS-TF-56-4-B-C-.5	\$315	RD1-RS-TF-56C-4-B-C-.5	\$330	RD1-RS-TF-56C-4-B-C-.5-RND	\$320
3/4	1800	RD1-RS-TF-56-4-B-C-.75	\$348	RD1-RS-TF-56C-4-B-C-.75	\$360	RD1-RS-TF-56C-4-B-C-.75-RND	\$358
1	1800	RD1-RS-TF-56H-4-B-C-1	\$436	RD1-RS-TF-56HC-4-B-C-1	\$461	RD1-RS-TF-56HC-4-B-C-1-RND	\$454
	1800	RD1-RS-TF-143T-4-B-C-1	\$448	RD1-RS-TF-143TC-4-B-C-1	\$463	RD1-RS-TF-143TC-4-B-C-1-RND	N/A
1.5	1800	RD1-RS-TF-56H-4-B-C-1.5	\$479	RD1-RS-TF-56HC-4-B-C-1.5	\$507	RD1-RS-TF-56HC-4-B-C-1.5-RND	\$483
	1800	RD1-RS-TF-145T-4-B-C-1.5	\$489	RD1-RS-TF-145TC-4-B-C-1.5	\$515	RD1-RS-TF-145TC-4-B-C-1.5-RND	N/A
2	1800	RD1-RS-TF-56H-4-B-C-2	\$534	RD1-RS-TF-56HC-4-B-C-2	\$590	RD1-RS-TF-56HC-4-B-C-2-RND	\$542
	1800	RD1-RS-TF-145T-4-B-C-2	\$543	RD1-RS-TF-145TC-4-B-C-2	\$599	RD1-RS-TF-145TC-4-B-C-2-RND	N/A
3	1800	RD1-RS-TF-182T-4-B-B-3	\$796	RD1-RS-TF-182TC-4-B-B-3	\$834	RD1-RS-TF-182TC-4-B-B-3-RND	N/A
5	1800	RD1-RS-TF-184T-4-B-B-5	\$958	RD1-RS-TF-184TC-4-B-B-5	\$973	RD1-RS-TF-184TC-4-B-B-5-RND	N/A
7.5	1800	RD1-RS-TF-213TZ-4-B-B-7.5	\$1,463	RD1-RS-TF-213TCZ-4-B-B-7.5	\$1,512	RD1-RS-TF-213TCZ-4-B-B-7.5-RND	N/A
10	1800	RD1-RS-TF-215T-4-B-B-10	\$1,743	RD1-RS-TF-215TC-4-B-B-10	\$1,789	RD1-RS-TF-215TC-4-B-B-10-RND	N/A

AUGER MOTORS

HP	Sync RPM	Model Number	Price
1/2	1800	RD1-RS-TF-56Y-4-B-C-.5	\$348
3/4	1800	RD1-RS-TF-56Y-4-B-C-.75	\$392
1	1800	RD1-RS-TF-56Y-4-B-C-1	\$478



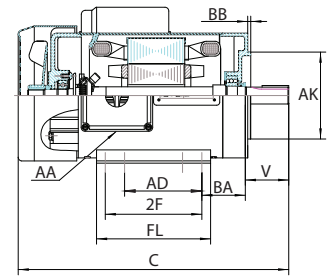
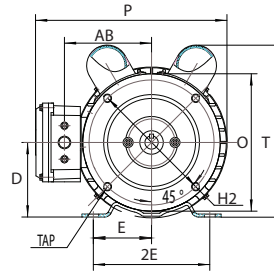
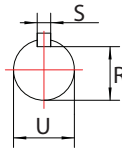
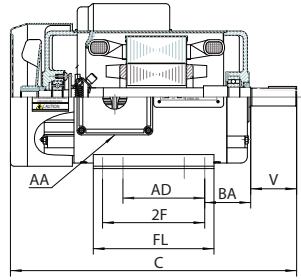
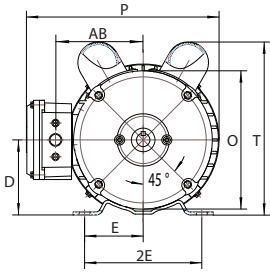
Contact Techtop to replace your unreliable inefficient auger gearboxes with high efficiency Helical units

Continued on back

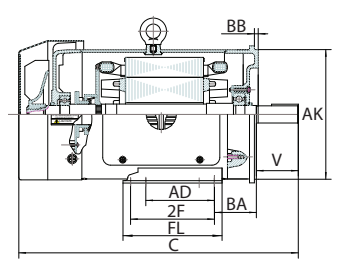
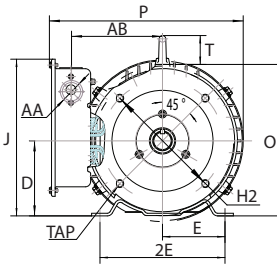
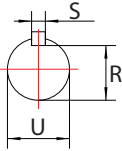
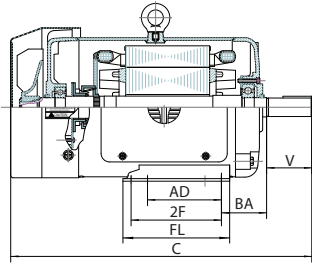
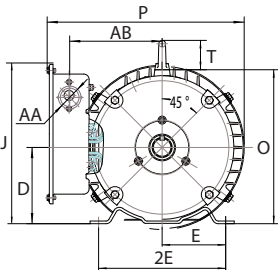
RIGID

SHAFT

C - FACE



FRAME	AA	AB	AD	AK	BA	BB	C	D	E	2E	FL	2F	O	P	R	S	T	U	V	TAP	H2
56 (1/3 HP)	0.88	3.7	2.65	---	2.25	---	10.7	3.5	2.44	4.88	4	3	5.67	8.3	0.517	0.188	7.7	0.625	1.88	---	---
56C (1/3 HP)				4.5		0.16														3/8-16	5.875
56				---		---														---	---
56C				4.5		0.16														3/8-16	5.875
143/145T	4.1	4	4	---	0.16	---	14.1	2.75	5.5	5.9	5	6.5	9.1	0.771	8.1	0.875	2.25	---	---		
143/145TC				4.5		0.16												3/8-16	5.875		



FRAME	AA	AB	AD	AK	BA	BB	C	D	E	2E	FL	2F	J	O	P	R	S	T	U	V	TAP	H2																	
182T	1.13	5.5	4.5	---	2.75	---	16.95	4.5	3.75	7.5	6.5	5.5	9.45	9.1	11.65	0.986	0.25	1.75	1.125	2.75	---	---																	
182TC				8.5		0.25															1/2-13	7.25																	
184T				---		---															---	---																	
184TC				8.5		0.25															1/2-13	7.25																	
213TZ*				---		---															---	---																	
213TCZ*				8.5		0.25															1/2-13	7.25																	
215T				6.2		5.5															5.5	---	3.5	---	20	5.25	4.25	8.5	8.5	7	10.1	10.6	13.3	1.201	0.312	1.375	3.38	---	---
215TC																						8.5		0.25														1/2-13	7.25

* 213TZ MOTOR INCLUDES SHAFT ADAPTER TO 215T SHAFT SIZE

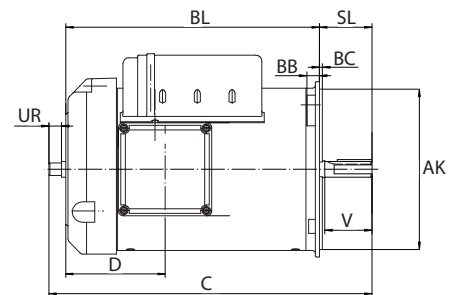
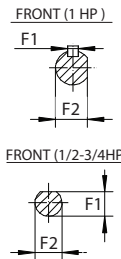
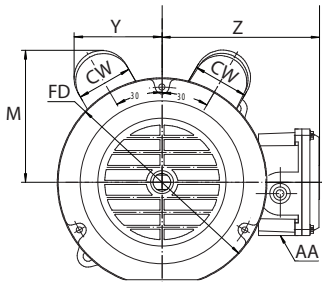
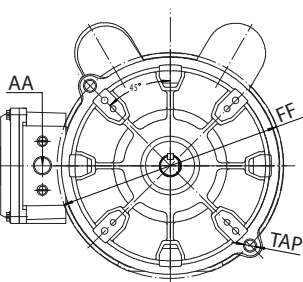
FRONT

REAR

SHAFT

SIDE

AUGER MOTORS



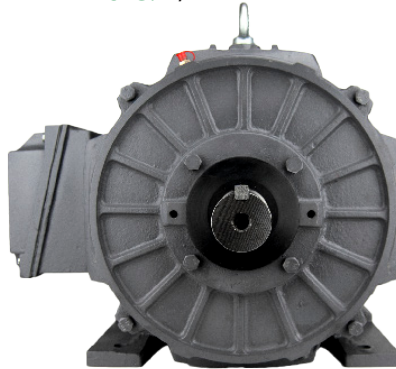
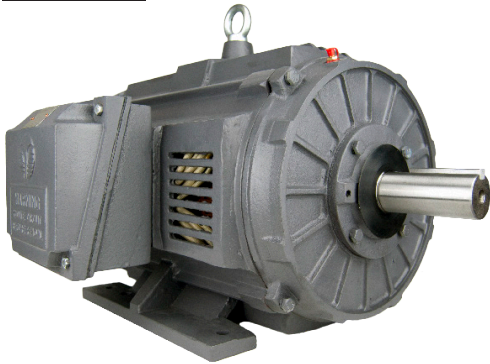
HP	AA	AK	BB	BC	BL	C	CW	D	FF	FD	F1	F2	M	SL	UR	V	Y	Z	TAP	PRICE			
0.5	0.875	6.375	0.52	0.12	8.51	11.2	1.93	3.95	7.25	7.3	0.45	0.5	5.3	2.02	0.5	1.875	3.1	5.53	0.36	\$348			
0.75					10.11	12.8							0.175							0.57	4.6	2.09	\$376
1.0					12.87	0.175							0.57							4.6	2.09	\$406	



HP: 1–150
Pole: 2/4

Frame: 143T–445T
Volt: 230/460V

RPM: 1800/3600
BODY: T



STANDARD FEATURES

- NEMA Premium Efficiency
- Inverter Rated - 15:1 Constant Torque
- MG 1 Part 31 Compliant for VFD use
- IP 23 Rated - 40° Ambient Rating
- Double Lip Oil Seals on DE & ODE
- 1.25 SF up to 50HP (1.15 for larger frames)
- Vacuum Pressure Impregnated Winding
- Tropicalization Protection on Winding



- 1045 Steel Shaft (through 326T), 4140 (360T and up)
- Zerk Regreasable Bearings 254 Frame & Larger
- Nipple Seals Between Conduit Box and Body
- Rubber Slinger
- Conduit Box is 90° Rotatable
- Class H Insulation with Class F Stator
- C Flanges Available
- 36 Month Warranty from Date of Purchase

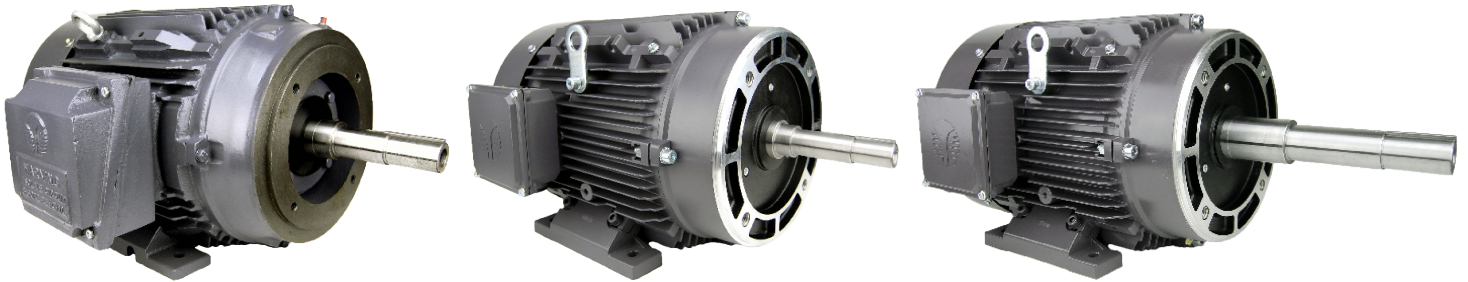
HP	Sync Speed	Model Number	List Price		HP	Sync Speed	Model Number	List Price	
			Rigid Base	C-Face				Rigid Base	C-Face
1	3600	GR3-RS-OP-143T-2-B-D-1	\$407	\$459	20	1800	GR3-CI-OP-256T-4-BR-D-20	\$1,911	\$2,061
	1800	GR3-RS-OP-143T-4-B-D-1	\$409	\$461	25	1800	GR3-CI-OP-284T-4-BR-D-25	\$2,281	\$2,474
1.5	3600	GR3-RS-OP-143T-2-B-D-1.5	\$431	\$483	30	1800	GR3-CI-OP-286T-4-BR-D-30	\$2,689	\$2,882
	1800	GR3-RS-OP-145T-4-B-D-1.5	\$445	\$497	40	1800	GR3-CI-OP-324T-4-BR-D-40	\$3,517	\$3,800
2	3600	GR3-RS-OP-145T-2-B-D-2	\$477	\$529	50	1800	GR3-CI-OP-326T-4-BR-D-50	\$4,185	\$4,468
	1800	GR3-RS-OP-145T-4-B-D-2	\$476	\$528	60	1800	GR3-CI-OP-364T-4-BR-D-60	\$5,575	\$5,969
3	3600	GR3-RS-OP-145T-2-B-D-3	\$631	\$735	75	1800	GR3-CI-OP-365T-4-BR-D-75	\$6,597	\$6,991
	1800	GR3-RS-OP-182T-4-B-D-3	\$620	\$724		1800	GR3-CI-OP-365T-4-RR-D-75	\$6,597	NA
5	3600	GR3-RS-OP-182T-2-B-D-5	\$692	\$796	100	1800	GR3-CI-OP-404T-4-BR-D-100	\$7,923	\$8,417
	1800	GR3-RS-OP-184T-4-B-D-5	\$700	\$804		1800	GR3-CI-OP-404T-4-RR-D-100	\$7,923	NA
7.5	3600	GR3-RS-OP-184T-2-B-D-7.5	\$973	\$1,106	125	1800	GR3-CI-OP-444T-4-BR-E-125	\$12,045	\$12,666
	1800	GR3-RS-OP-213T-4-B-D-7.5	\$986	\$1,119		1800	GR3-CI-OP-444T-4-RR-E-125	\$12,045	NA
10	3600	GR3-RS-OP-213T-2-B-D-10	\$1,116	\$1,249	150	1800	GR3-CI-OP-445T-4-BR-E-150	\$14,400	\$15,021
	1800	GR3-RS-OP-215T-4-B-D-10	\$1,128	\$1,261		1800	GR3-CI-OP-445T-4-RR-E-150	\$14,400	NA
15	1800	GR3-CI-OP-254T-4-BR-D-15	\$1,632	\$1,782					

*Call for models not listed.

HP: 1/3–75
Pole: 2/4

Frame: 56J–365JP
Volt: 230/460V

RPM: 3600/1800
Body: J/JM/JP



STANDARD FEATURES



- NEMA Premium Efficiency
- IP 55 Ingress Protection
- MG1 Part 31 for VFD use
- Dual Voltage 230/460V (usable @ 208)
- 1.15 Service Factor
- 40° C Ambient Rating
- Double Lip Oil Seals
- 300 Series Stainless Steel Shaft
- Multi mount Removable Feet
- Stainless Steel Nameplate
- Tropicalized VPI Stator
- Inverter Rated - 20:1 Variable Torque
- One-Way Brass Condensation Drains
- Regreasable Bearings 254 Frame & Larger
- F1, F2, F3 Field Convertible (shipped F1)
- Class H Insulated Stator with Class F Leads
- Class 1, Div 2, Groups A, B, C & D Compliant

HP	Sync Speed	Model Number	List Price	HP	Sync Speed	Model Number	List Price	HP	Sync Speed	Model Number	List Price
1/3	3600	GR3-AL-TF-56J-2-B-D-.33	\$322	3	3600	GR3-AL-TF-182JP-2-B-D-3	\$778	25	3600	GR3-CI-TF-284JM-2-BR-D-25	\$2,734
	1800	GR3-AL-TF-56J-4-B-D-.33	\$313		1800	GR3-AL-TF-182JP-4-B-D-3	\$777		1800	GR3-CI-TF-284JM-4-BR-D-25	\$2,739
1/2	3600	GR3-AL-TF-56J-2-B-D-.5	\$339	5	3600	GR3-AL-TF-184JM-2-B-D-5	\$848	30	3600	GR3-CI-TF-256JP-2-BR-D-25	\$2,681
	1800	GR3-AL-TF-56J-4-B-D-.5	\$330		1800	GR3-AL-TF-184JM-4-B-D-5	\$876		3600	GR3-CI-TF-284JP-2-BR-D-25	\$2,734
3/4	3600	GR3-AL-TF-56J-2-B-D-.75	\$361	7.5	3600	GR3-AL-TF-184JP-2-B-D-5	\$848	40	1800	GR3-CI-TF-284JP-4-BR-D-25	\$2,739
	1800	GR3-AL-TF-56J-4-B-D-.75	\$359		1800	GR3-AL-TF-184JP-4-B-D-5	\$876		3600	GR3-CI-TF-286JM-2-BR-D-30	\$3,199
1	3600	GR3-AL-TF-56J-2-B-D-1	\$378	10	3600	GR3-AL-TF-184JM-2-B-D-7.5	\$1,211	50	1800	GR3-CI-TF-286JM-4-BR-D-30	\$3,182
	1800	GR3-AL-TF-56J-4-B-D-1	\$405		3600	GR3-AL-TF-213JM-2-B-D-7.5	\$1,142		3600	GR3-CI-TF-286JP-2-BR-D-30	\$3,199
	1800	GR3-AL-TF-143JM-4-B-D-1	\$433		1800	GR3-AL-TF-213JM-4-B-D-7.5	\$1,218		1800	GR3-CI-TF-286JP-4-BR-D-30	\$3,182
	1800	GR3-AL-TF-143JP-4-B-D-1	\$433		3600	GR3-AL-TF-184JP-2-B-D-7.5	\$1,211		3600	GR3-CI-TF-286JM-2-BR-D-40	\$4,161
1.5	3600	GR3-AL-TF-56J-2-B-D-1.5	\$396	15	3600	GR3-AL-TF-213JP-2-B-D-7.5	\$1,142	60	3600	GR3-CI-TF-324JM-2-BR-D-40	\$4,225
	1800	GR3-AL-TF-56J-4-B-D-1.5	\$489		1800	GR3-AL-TF-213JP-4-B-D-7.5	\$1,218		1800	GR3-CI-TF-324JM-4-BR-D-40	\$4,217
	3600	GR3-AL-TF-143JM-2-B-D-1.5	\$446		3600	GR3-AL-TF-215JM-2-B-D-10	\$1,275		3600	GR3-CI-TF-286JP-2-BR-D-40	\$4,231
	1800	GR3-AL-TF-145JM-4-B-D-1.5	\$509		1800	GR3-AL-TF-215JM-4-B-D-10	\$1,413		3600	GR3-CI-TF-324JP-2-BR-D-40	\$4,225
2	3600	GR3-AL-TF-143JP-2-B-D-1.5	\$446	20	3600	GR3-AL-TF-215JP-2-B-D-10	\$1,275	75	1800	GR3-CI-TF-324JP-4-BR-D-40	\$4,217
	1800	GR3-AL-TF-145JP-4-B-D-1.5	\$509		1800	GR3-AL-TF-215JP-4-B-D-10	\$1,413		3600	GR3-CI-TF-326JM-2-BR-D-50	\$4,796
	3600	GR3-AL-TF-56J-2-B-D-2	\$422		3600	GR3-AL-TF-215JM-2-B-D-15	\$2,058		1800	GR3-CI-TF-326JM-4-BR-D-50	\$4,790
	1800	GR3-AL-TF-56J-4-B-D-2	\$517		3600	GR3-CI-TF-254JM-2-BR-D-15	\$2,043		3600	GR3-CI-TF-326JP-2-BR-D-50	\$4,796
3	3600	GR3-AL-TF-145JM-2-B-D-2	\$513	25	1800	GR3-CI-TF-254JM-4-BR-D-15	\$1,987	75	1800	GR3-CI-TF-326JP-4-BR-D-50	\$4,790
	1800	GR3-AL-TF-145JM-4-B-D-2	\$538		3600	GR3-AL-TF-215JP-2-B-D-15	\$2,058		3600	GR3-CI-TF-364JM-2-BR-D-60	\$6,440
	3600	GR3-AL-TF-145JP-2-B-D-2	\$513		3600	GR3-CI-TF-254JP-2-BR-D-15	\$2,043		1800	GR3-CI-TF-364JM-4-BR-D-60	\$6,448
	1800	GR3-AL-TF-145JP-4-B-D-2	\$538		1800	GR3-CI-TF-254JP-4-BR-D-15	\$1,987		3600	GR3-CI-TF-364JP-2-BR-D-60	\$6,440
3	3600	GR3-AL-TF-56J-2-B-D-3	\$545	25	3600	GR3-CI-TF-256JM-2-BR-D-20	\$2,341	75	1800	GR3-CI-TF-364JP-4-BR-D-60	\$6,448
	3600	GR3-AL-TF-145JM-2-B-D-3	\$743		1800	GR3-CI-TF-256JM-4-BR-D-20	\$2,258		3600	GR3-CI-TF-365JM-2-BR-D-75	\$7,433
	3600	GR3-AL-TF-182JM-2-B-D-3	\$778		3600	GR3-CI-TF-256JP-2-BR-D-20	\$2,341		1800	GR3-CI-TF-365JM-4-BR-D-75	\$7,555
	1800	GR3-AL-TF-182JM-4-B-D-3	\$777		1800	GR3-CI-TF-256JP-4-BR-D-20	\$2,258		3600	GR3-CI-TF-365JP-2-BR-D-75	\$7,433
				25	3600	GR3-CI-TF-256JM-2-BR-D-25	\$2,681		1800	GR3-CI-TF-365JP-4-BR-D-75	\$7,555

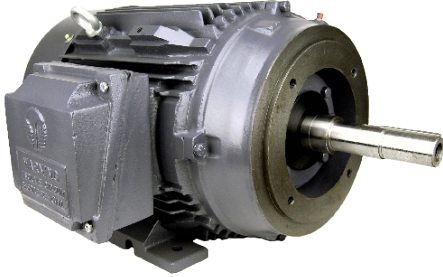
Continued on back

**REMAINING STOCK
AVAILABLE ONLY**

**HP: 1/3–50
Pole: 2/4**

**Frame: 56J–326JP
Volt: 230/460V**

**RPM: 3600/1800
Body: J/JM/JP**



STANDARD FEATURES



- IP 55 Rated
- MG1 Part 31 for VFD use
- Continuous Duty
- Dual Voltage
- 1.15 Service Factor
- 40°C Ambient Rating
- Rubber Slinger
- Double Lip Oil Seals
- 1045 Carbon Steel Shafts
- Oversized Bearings
- Multi mount Removable Feet
- Conduit Box is 90° Rotatable
- Stainless Steel Nameplate
- Tropicalization on Stator Winding
- Inverter Rated - 20:1 Variable Torque
- One-Way Brass Condensation Drains
- Regreasable Bearings 254 Frame & Larger
- F1, F2, F3 Field Convertible (shipped F1)
- Class H Insulated Stator with Class F Leads
- Class 1, Div 2, Groups A, B, C & D Compliant
- 24 Month Warranty from Date of Purchase

HP	Sync Speed	Model Number	List Price	HP	Sync Speed	Model Number	List Price	HP	Sync Speed	Model Number	List Price
1/3	3600	GA3-AL-TF-56J-2-B-D-33	\$278	3	1800	GA3-AL-TF-182JM-4-B-D-3	\$658	20	3600	GA3-CI-TF-256JP-2-BR-D-20	\$1,984
	1800	GA3-AL-TF-56J-4-B-D-33	\$270		3600	GA3-AL-TF-182JP-2-B-D-3	\$659		1800	GA3-CI-TF-256JP-4-BR-D-20	\$1,914
1/2	3600	GA3-AL-TF-56J-2-B-D-5	\$293	5	1800	GA3-AL-TF-182JP-4-B-D-3	\$658	25	3600	GA3-CI-TF-256JM-2-BR-D-25	\$2,272
	1800	GA3-AL-TF-56J-4-B-D-5	\$285		3600	GA3-AL-TF-184JM-2-B-D-5	\$719		3600	GA3-CI-TF-284JM-2-BR-D-25	\$2,317
3/4	3600	GA3-AL-TF-56J-2-B-D-75	\$311	7.5	1800	GA3-AL-TF-184JM-4-B-D-5	\$742	30	1800	GA3-CI-TF-284JM-4-BR-D-25	\$2,321
	1800	GA3-AL-TF-56J-4-B-D-75	\$309		3600	GA3-AL-TF-184JP-2-B-D-5	\$719		3600	GA3-CI-TF-256JP-2-BR-D-25	\$2,272
1	3600	GA3-AL-TF-56J-2-B-D-1	\$326	10	1800	GA3-AL-TF-184JP-4-B-D-5	\$742	40	3600	GA3-CI-TF-284JP-2-BR-D-25	\$2,317
	1800	GA3-AL-TF-56J-4-B-D-1	\$349		3600	GA3-AL-TF-184JM-2-B-D-7.5	\$1,026		1800	GA3-CI-TF-284JP-4-BR-D-25	\$2,321
	1800	GA3-AL-TF-143JM-4-B-D-1	\$367		3600	GA3-AL-TF-213JM-2-B-D-7.5	\$968		3600	GA3-CI-TF-286JM-2-BR-D-30	\$2,688
	1800	GA3-AL-TF-143JP-4-B-D-1	\$367		1800	GA3-AL-TF-213JM-4-B-D-7.5	\$1,032		1800	GA3-CI-TF-286JM-4-BR-D-30	\$2,674
1.5	3600	GA3-AL-TF-56J-2-B-D-1.5	\$341	15	3600	GA3-AL-TF-184JP-2-B-D-7.5	\$1,026	50	3600	GA3-CI-TF-286JP-2-BR-D-30	\$2,688
	1800	GA3-AL-TF-56J-4-B-D-1.5	\$389		3600	GA3-AL-TF-213JP-2-B-D-7.5	\$968		1800	GA3-CI-TF-286JP-4-BR-D-30	\$2,674
	3600	GA3-AL-TF-143JM-2-B-D-1.5	\$378		1800	GA3-AL-TF-213JP-4-B-D-7.5	\$1,032		3600	GA3-CI-TF-286JM-2-BR-D-40	\$3,497
	1800	GA3-AL-TF-145JM-4-B-D-1.5	\$431		3600	GA3-AL-TF-215JM-2-B-D-10	\$1,081		3600	GA3-CI-TF-324JM-2-BR-D-40	\$3,491
2	3600	GA3-AL-TF-143JP-2-B-D-1.5	\$378	20	1800	GA3-AL-TF-215JM-4-B-D-10	\$1,197	50	1800	GA3-CI-TF-324JM-4-BR-D-40	\$3,485
	1800	GA3-AL-TF-145JP-4-B-D-1.5	\$431		3600	GA3-AL-TF-215JP-2-B-D-10	\$1,081		3600	GA3-CI-TF-286JP-2-BR-D-40	\$3,497
	3600	GA3-AL-TF-56J-2-B-D-2	\$356		1800	GA3-AL-TF-215JP-4-B-D-10	\$1,197		3600	GA3-CI-TF-324JP-2-BR-D-40	\$3,491
	1800	GA3-AL-TF-56J-4-B-D-2	\$429		3600	GA3-AL-TF-215JM-2-B-D-15	\$1,744		1800	GA3-CI-TF-324JP-4-BR-D-40	\$3,485
	3600	GA3-AL-TF-145JM-2-B-D-2	\$435		3600	GA3-CI-TF-254JM-2-BR-D-15	\$1,731		3600	GA3-CI-TF-326JM-2-BR-D-50	\$3,964
	1800	GA3-AL-TF-145JM-4-B-D-2	\$456		1800	GA3-CI-TF-254JM-4-BR-D-15	\$1,684		1800	GA3-CI-TF-326JM-4-BR-D-50	\$3,959
3	3600	GA3-AL-TF-145JP-2-B-D-2	\$435	20	3600	GA3-AL-TF-215JP-2-B-D-15	\$1,744	50	3600	GA3-CI-TF-326JP-2-BR-D-50	\$3,964
	1800	GA3-AL-TF-145JP-4-B-D-2	\$456		3600	GA3-CI-TF-254JP-2-BR-D-15	\$1,731		1800	GA3-CI-TF-326JP-4-BR-D-50	\$3,959
	3600	GA3-AL-TF-56J-2-B-D-3	\$433		1800	GA3-CI-TF-254JP-4-BR-D-15	\$1,684				
3	3600	GA3-AL-TF-145JM-2-B-D-3	\$630	20	3600	GA3-AL-TF-182JM-2-B-D-3	\$659				
	1800	GA3-AL-TF-182JM-2-B-D-3	\$659		1800	GA3-CI-TF-256JM-2-BR-D-20	\$1,984				



HP: 75-300
Pole: 4/6

Frame: 365T-449T
Volt: 460V

RPM: 1800/1200
Body: T



STANDARD FEATURES



- NEMA Premium Efficiency- Design C Torque
- 6 Lead - 460V
- Drive-end Roller Bearing
- Oversized Bearings on DE & ODE
- 1.15 Service Factor
- 40° C Ambient Temperature Rated
- VPI Lap Wound Coil
- Wye-Delta Start Wound
- 4140 Carbon Steel Shaft
- Zerk Fitting Regreaseable Bearing
- Full Cast Iron Construction
- Double Lip Oil Seals on DE & ODE
- Rubber Slinger
- Split Conduit Box is 90° Rotatable
- F1 to F2 Field Convertible (Shipped F1)
- Class F Insulation with Class H Stator
- EISA Compliant
- 24 Month Warranty from Purchase Date

HP	Sync. Speed	Model Number	LRT	List Price
75	1800	OX3-CI-TF-365T-4-RR-E-75	331%	\$ 6,903
	1200	OX3-CI-TF-405T-6-RR-E-75	275%	\$ 8,097
100	1800	OX3-CI-TF-405T-4-RR-E-100	219%	\$ 8,290
	1200	OX3-CI-TF-444T-6-RR-E-100	210%	\$ 12,558
125	1800	OX3-CI-TF-444T-4-RR-E-125	269%	\$ 12,603
	1200	OX3-CI-TF-445T-6-RR-E-125	217%	\$ 13,870
150	1800	OX3-CI-TF-445T-4-RR-E-150	222%	\$ 15,067
	1200	OX3-CI-TF-447T-6-RR-E-150	236%	\$ 17,532
200	1800	OX3-CI-TF-447T-4-RR-E-200	243%	\$ 18,837
	1200	OX3-CI-TF-449T-6-RR-E-200	241%	\$ 21,917
250	1800	OX3-CI-TF-449T-4-RR-E-250	228%	\$ 21,375
300	1800	OX3-CI-TF-449T-4-RR-E-300	251%	\$ 24,446

**Lift Strap
Included**



HP: 1-300

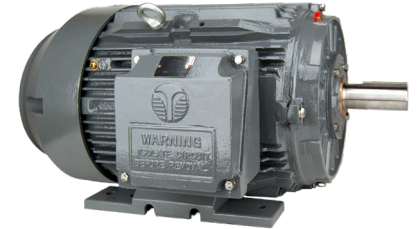
Frame: 143T-449T

RPM: 3600/1800/1200

Pole: 2/4/6

Volt: 460V

Body: T-Frame



STANDARD FEATURES



- **TEFC IP 56 Protection**
- 40°C Ambient Temp. Rating
- Inverter Rated - 15:1 Constant Torque MG1 Part 31
- Complete Cast-Iron Construction
- 2-Part Epoxy Paint Protection
- **VPI with Tropicalization on Stator Windings**
- Dual Oversized Bearings on DE & ODE
- Labyrinth Seals Installed on DE & ODE
- **Felt Wiper on Inner Bearing Retainer**
- **Bearing Grease Chamber Pressure Relief Valve**

- **Stainless Steel Hardware**
- Regreasable Bearings
- **One-way Brass Condensation Drains**
- 1.25 Service Factor up to 50HP (1.15 for Larger Frames)
- C & D Flanges Available
- Meets IEEE 841 Standards / IEEE 45 Marine Duty
- **Class H Insulation**
- **Drive End Shaft Grounding Brush**
- 60 Month Warranty From Date of Shipment



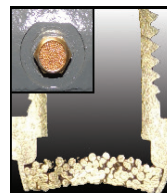
Labyrinth seals on both ends of motor



Class H - Silicone Lead wires with Fiberglass jacket protects leads from abrasion but remain flexible



Internal Shaft Grounding



Sintered brass breathers allow condensation to leave motor but resist water intrusion



Grease pressure reliefs act to battle overgreasing

Continued on back

MODEL AND LIST PRICES PRICE

HP	Sync. Speed	Model Number	List Price	
			Rigid Base	C-Face
1	3600	SD3-143T-2-BR-E-1	675	759
	1800	SD3-143T-4-BR-E-1	717	806
	1200	SD3-145T-6-BR-E-1	784	870
1.5	3600	SD3-143T-2-BR-E-1.5	710	794
	1800	SD3-145T-4-BR-E-1.5	780	869
	1200	SD3-182T-6-BR-E-1.5	1064	1262
2	3600	SD3-145T-2-BR-E-2	787	871
	1800	SD3-145T-4-BR-E-2	810	896
	1200	SD3-184T-6-BR-E-2	1181	1369
3	3600	SD3-182T-2-BR-E-3	1042	1209
	1800	SD3-182T-4-BR-E-3	1086	1263
	1200	SD3-213T-6-BR-E-3	1442	1655
5	3600	SD3-184T-2-BR-E-5	1142	1309
	1800	SD3-184T-4-BR-E-5	1190	1362
	1200	SD3-215T-6-BR-E-5	1880	2093
7.5	3600	SD3-213T-2-BR-E-7.5	1605	1818
	1800	SD3-213T-4-BR-E-7.5	1678	1898
	1200	SD3-254T-6-BR-E-7.5	2633	2903
10	3600	SD3-215T-2-BR-E-10	1840	2053
	1800	SD3-215T-4-BR-E-10	1861	2074
	1200	SD3-256T-6-BR-E-10	3230	3485
15	3600	SD3-254T-2-BR-E-15	2519	2745
	1800	SD3-254T-4-BR-E-15	2523	2748
	1200	SD3-284T-6-BR-E-15	4039	4368
20	3600	SD3-256T-2-BR-E-20	2927	3153
	1800	SD3-256T-4-BR-E-20	2955	3180
	1200	SD3-286T-6-BR-E-20	4617	4946
25	3600	SD3-284TS-2-BR-E-25	3371	3651
	1800	SD3-284T-4-BR-E-25	3763	4072
	1200	SD3-324T-6-BR-E-25	5722	6175
30	3600	SD3-286TS-2-BR-E-30	4031	4311
	1800	SD3-286T-4-BR-E-30	4158	4448
	1200	SD3-326T-6-BR-E-30	6632	7085

HP	Sync. Speed	Model Number	List Price	
			Rigid Base	C-Face
40	3600	SD3-324TS-2-BR-E-40	4949	5346
	1800	SD3-324T-4-BR-E-40	5076	5473
	1200	SD3-364T-6-BR-E-40	7968	8599
50	3600	SD3-326TS-2-BR-E-50	5835	6232
	1800	SD3-326T-4-BR-E-50	6040	6437
	1200	SD3-365T-6-BR-E-50	9987	10618
60	3600	SD3-364TS-2-BR-E-60	8035	8587
	1800	SD3-364T-4-BR-E-60	8046	8598
	1200	SD3-404T-6-RR-E-60	11033	
75	3600	SD3-365TS-2-BR-E-75	9359	9911
	1800	SD3-365T-4-BR-E-75	9521	10073
	1800	SD3-365T-4-RR-E-75	9521	10073
	1200	SD3-405T-6-RR-E-75	11967	
100	3600	SD3-405TS-2-BR-E-100	11382	12074
	1800	SD3-405T-4-BR-E-100	12252	12993
	1800	SD3-405T-4-RR-E-100	12252	
	1200	SD3-444T-6-RR-E-100	19865	
125	3600	SD3-444TS-2-BR-E-125	17283	18153
	1800	SD3-444T-4-BR-E-125	17384	18254
	1800	SD3-444T-4-RR-E-125	17384	
	1200	SD3-445T-6-RR-E-125	17765	
150	3600	SD3-445TS-2-BR-E-150	20783	21485
	1800	SD3-445T-4-BR-E-150	20783	21653
	1800	SD3-445T-4-RR-E-150	20615	
	1200	SD3-447T-6-RR-E-150	20728	
200	3600	SD3-447TS-2-BR-E-200	24781	25651
	1800	SD3-447T-4-BR-E-200	25983	26853
	1800	SD3-447T-4-RR-E-200	25983	
	1200	SD3-449T-6-RR-E-200	28072	
250	3600	SD3-449TS-2-BR-E-250	28120	29240
	1800	SD3-449T-4-BR-E-250	29484	30604
	1800	SD3-449T-4-RR-E-250	29484	
300	1800	SD3-449T-4-BR-E-300	37061	38182
	1800	SD3-449T-4-RR-E-300	37061	38182

Multiplier Code: SS



Designed for use on SCR and PWM type direct current adjustable speed drives and on across-the-line DC controls. Ideal applications include conveyors, turntables, packaging or anywhere adjustable speed and constant torque is required.

STANDARD FEATURES

- SCR Rated
- 20:1 Constant Torque speed range
- 1.0 Service Factor
- Rolled Steel Frame Construction
- Bolt-on Removable Base
- Double Shielded Ball Bearings
- 1045 Steel Shaft
- Corrosion Resistant Hardware



- Continuous (S1) Duty
- Ambient Temperatures up to 40°C
- Installation up to 3300 ft. (1000 MASL)
- IP 54 (TEFC) & IP 55 (TENV) Rated
- Class F Insulation
- Class B Temperature Rise
- 12 Month Warranty

HP	Model Number	Sync. Speed	Frame	Voltage (DC)	Encl.	Full Load Amps (A)	Shipping Weight	"C" Dim	List Price
1/8	DC18-12-63-NV	1800	63B14	12 V	TENV	10.7	6	167mm	\$428
	DC18-90-63-NV	1800	63B14	90 V	TENV	1.4	6	167mm	\$362
1/4	DC14-12-63-NV	1800	63B14	12 V	TENV	21.5	8	216mm	\$470
	DC14-90-63-NV	1800	63B14	90 V	TENV	2.8	8	216mm	\$379
	DC14-90-56-NV	1800	56C	90 V	TENV	2.9	21	11.2"	\$307
	DC14-90-56-FC	1800	56C	90 V	TEFC	2.9	21	11.6"	\$318
1/3	DC13-90-56-NV	1800	56C	90 V	TENV	3.6	23	11.2"	\$332
1/2	DC12-90-56-NV	1800	56C	90 V	TENV	5.2	25	12.0"	\$391
	DC12-12-56-FC	1800	56C	12 V	TEFC	39.0	25	12.4"	\$573
	DC12-90-56-FC	1800	56C	90 V	TEFC	5.2	25	12.4"	\$379
	DC12-180-56-FC	1800	56C	180 V	TEFC	2.6	25	12.4"	\$379
3/4	DC34-90-56-FC	1800	56C	90 V	TEFC	7.8	30	13.9"	\$468
	DC34-180-56-FC	1800	56C	180 V	TEFC	3.9	30	13.9"	\$462
1	DC1-90-56-FC	1800	56C	90 V	TEFC	10.4	33	14.8"	\$507
	DC1-180-56-FC	1800	56C	180 V	TEFC	5.2	33	14.8"	\$490
1.5	DC112-180-145-FC	1800	145TC	180 V	TEFC	7.2	45	16.0	\$1,096
2	DC2-180-145-FC	1800	145TC	180 V	TEFC	10.4	55	16.8	\$1,223
3	DC3-180-145-FC	1800	145TC	180 V	TEFC	17	70	17.7	\$1,373

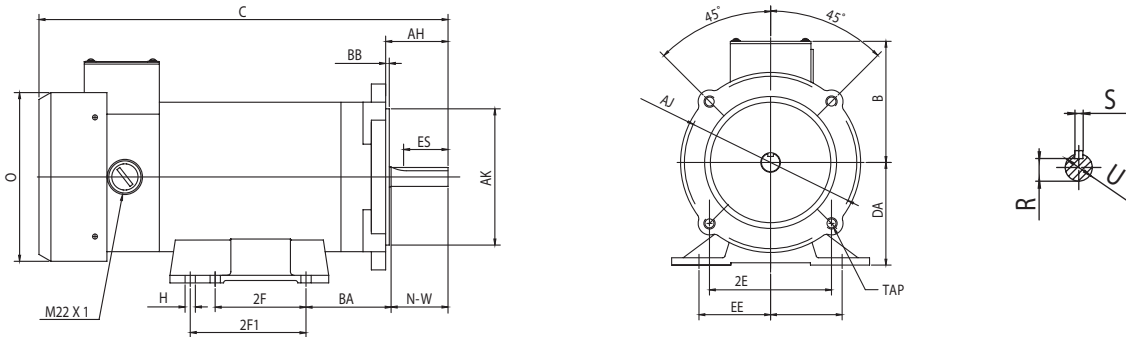
* FC = FAN COOLED NV = NON VENTILATED

PM DC MOTOR REPLACEMENT PARTS

Part	Model Number	Description	List Price
Fan	DC4 FAN	External Cooling Fan for DC4 Series Motors	\$23
	DC8 FAN	External Cooling Fan for DC80/81/82 Series Motors	\$25
	DC8-CF	External Cooling Fan for 140T Frame Series Motors	\$25
Fan Cover	DC4 FAN COVER	External Cooling Fan Cover for DC4 Series Motors	\$36
	DC8 FAN COVER	External Cooling Fan Cover for DC80/81/82 Series Motors	\$40
Carbon Brush	DCRBIEC-16/18	MLD Carbon Brush 10mm x 5mm (DC16/DC18)	\$29
	DCRBIEC-14	MLD Carbon Brush 10mm x 8.5mm (DC14)	\$29
	DCRBN-56	MLD Carbon Brush 16mm x 6mm 56C	\$29
	DCRBN-140	MLD Carbon Brush 18mm x 10mm 140TC	\$45
Brush Caps	DCRBCIEC-14	MLD DC 63B14 Brush Caps	\$10
	DCRBCN-56	MLD DC 56C Brush Caps	\$10
	DCRBCN-140	MLD DC 140TC Brush Caps	\$10

DIMENSIONAL DRAWINGS

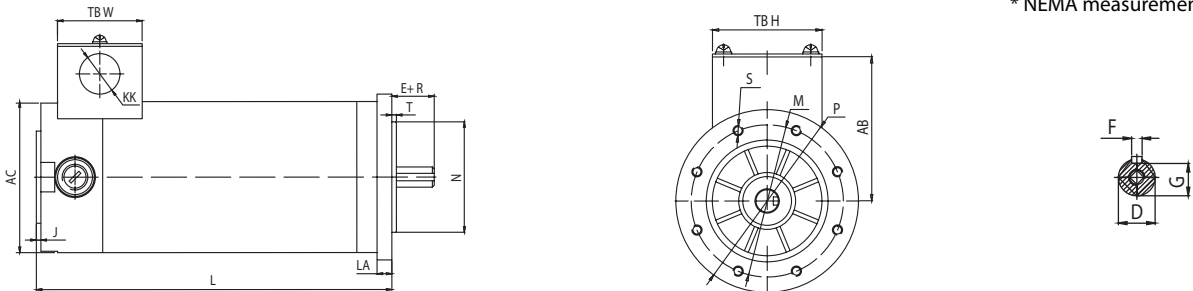
NEMA



NEMA Frame (HP)	Encl.	Foot Mounting					Shaft					General			NEMA C-Flange					
		2E	2F	2F1	H	BA	N-W	U	S	R	ES	AH	C	D	O	AB	AJ	AK	BB	TAP
56C (1/4)	TEFC	4.88	3.0	--	0.34	2.75	1.875	0.625	0.188	0.517	1.41	2.063	11.63	3.5	5.625	4.0	5.875	4.50	0.125	3*75-16
56C (1/4)	TENV	4.88	3.0	--	0.34	2.75	1.875	0.625	0.188	0.517	1.41	2.063	11.18	3.5	5.625	4.0	5.875	4.50	0.125	3*75-16
56C (1/3)	TEFC	4.88	3.0	--	0.34	2.75	1.875	0.625	0.188	0.517	1.41	2.063	11.63	3.5	5.625	4.0	5.875	4.50	0.125	3*75-16
56C (1/3)	TENV	4.88	3.0	--	0.34	2.75	1.875	0.625	0.188	0.517	1.41	2.063	11.18	3.5	5.625	4.0	5.875	4.50	0.125	3*75-16
56C (1/2)	TEFC	4.88	3.0	--	0.34	2.75	1.875	0.625	0.188	0.517	1.41	2.063	12.44	3.5	5.625	4.0	5.875	4.50	0.125	3*75-16
56C (1/2)	TENV	4.88	3.0	--	0.34	2.75	1.875	0.625	0.188	0.517	1.41	2.063	12.01	3.5	5.625	4.0	5.875	4.50	0.125	3*75-16
56C (3/4)	TEFC	4.88	3.0	--	0.34	2.75	1.875	0.625	0.188	0.517	1.41	2.063	13.94	3.5	5.625	4.0	5.875	4.50	0.125	3*75-16
56C (1)	TEFC	4.88	3.0	--	0.34	2.75	1.875	0.625	0.188	0.517	1.41	2.063	14.75	3.5	5.625	4.0	5.875	4.50	0.125	3*75-16
145TC (1.5)	TEFC	5.5	4.0	5.0	0.32	2.75	2.0	0.875	0.188	0.771	1.41	2.120	16.00	3.5	7.0	4.5	5.875	4.50	0.125	3*75-16
145TC (2)	TEFC	5.5	4.0	5.0	0.32	2.75	2.0	0.875	0.188	0.771	1.41	2.120	16.75	3.5	7.0	4.5	5.875	4.50	0.125	3*75-16
145TC (3)	TEFC	5.5	4.0	5.0	0.32	2.75	2.0	0.875	0.188	0.771	1.41	2.120	17.72	3.5	7.0	4.5	5.875	4.50	0.125	3*75-16

* NEMA measurements in inches

METRIC



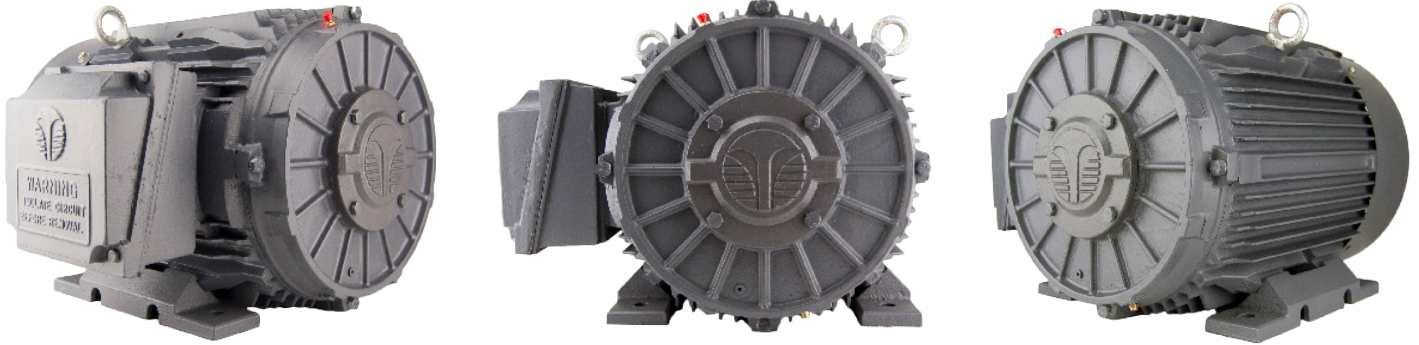
IEC Frame (HP)	Encl.	Shaft				General						IEC B14 C-Flange						
		D	F	G	E+R	AC	AD	L	J	TBW	TBH	KK	M	N	P	T	LA	S
63 B14 (1/8)	TENV	Ø11	4	8.5	23	Ø82	71	144	2.5	65	54	Ø22	Ø75	Ø60	Ø90	2.5	8	8-M5
63 B14 (1/4)	TENV	Ø11	4	8.5	23	Ø82	71	193	2.5	65	54	Ø22	Ø75	Ø60	Ø90	2.5	8	8-M5

* METRIC measurements in millimeters

HP: 3-75
Pole: 4

Frame: 182-365
Volt: 230/460V

RPM: 1800
Body: T



STANDARD FEATURES



- TEFC - IP 55 Rated
- 3 Lead - 230V / 12 Lead - 460V
- Double Lip Oil Seals
- Cast Iron Construction
- Dual Oversized Bearings
- F1, F2, F3 Field Convertible (326T & Below)
- One-Way Brass Condensation Drains
- 24 Month Warranty

3 LEAD SINGLE VOLTAGE

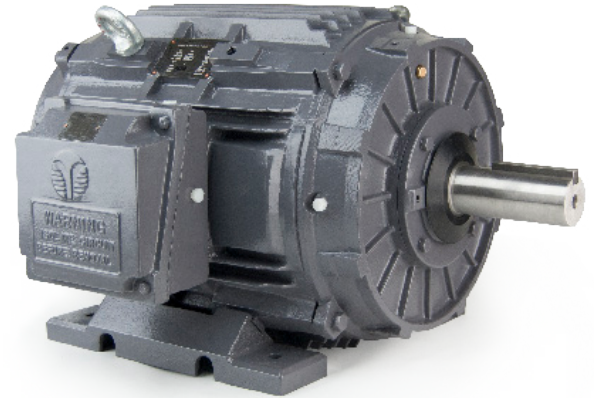
HP	Model Number	Voltage	List Price
3	PC3-CI-TF-182T-4-B-B-3	230	\$440
5	PC3-CI-TF-184T-4-B-B-5	230	\$620
7.5	PC3-CI-TF-213T-4-B-B-7.5	230	\$874
10	PC3-CI-TF-215T-4-B-B-10	230	\$1,019
15	PC3-CI-TF-254T-4-BR-B-15	230	\$1,423
20	PC3-CI-TF-256T-4-BR-B-20	230	\$1,610
25	PC3-CI-TF-284T-4-BR-B-25	230	\$1,972
30	PC3-CI-TF-286T-4-BR-B-30	230	\$2,345
40	PC3-CI-TF-324T-4-BR-B-40	230	\$3,055
50	PC3-CI-TF-326T-4-BR-B-50	230	\$3,533
60	PC3-CI-TF-364T-4-BR-B-60	230	\$4,528
75	PC3-CI-TF-365T-4-BR-B-75	230	\$5,240

12 LEAD DUAL VOLTAGE

HP	Model Number	Voltage	List Price
3	PC3-CI-TF-182T-4-B-D-3	230/460	\$440
5	PC3-CI-TF-184T-4-B-D-5	230/460	\$620
7.5	PC3-CI-TF-213T-4-B-D-7.5	230/460	\$874
10	PC3-CI-TF-215T-4-B-D-10	230/460	\$1,019
15	PC3-CI-TF-254T-4-BR-D-15	230/460	\$1,423
20	PC3-CI-TF-256T-4-BR-D-20	230/460	\$1,610
25	PC3-CI-TF-284T-4-BR-D-25	230/460	\$1,972
30	PC3-CI-TF-286T-4-BR-D-30	230/460	\$2,345
40	PC3-CI-TF-324T-4-BR-D-40	230/460	\$3,055
50	PC3-CI-TF-326T-4-BR-E-50	230/460	\$3,533
60	PC3-CI-TF-364T-4-BR-D-60	230/460	\$4,528
75	PC3-CI-TF-365T-4-BR-D-75	230/460	\$5,240

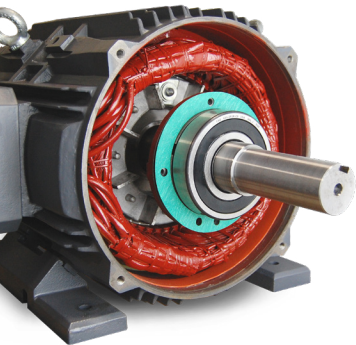
Multiplier Code: PC1

Techtop Cooling Tower motors are specifically built to combat the harsh cooling tower environments. Extreme wet environments require top-notch exterior ingress protection as well as high-performance condensation draining capability.



SPECIAL FEATURES

- Moisture resistant Stator Insulator Coating
- Drain provisions for All mounting positions
- Totally Enclosed Air Over Enclosure (TEAO)
- All direction Conduit box drain provisions
- Dual Oversized Sealed Bearings
- Bearing Retainer Gaskets Installed
- Silicone Sealed End Bells
- 2 Part Epoxy Top coat Sealant
- Lead Seal Conduit Box Gasket
- Space Heaters Installed
- Tapped Shaft for Vertical Lifting
- Stainless Steel Hardware



STANDARD FEATURES

- NEMA Premium Efficiency Rating
- Inverter Rated - 1000:1 Variable Torque
- MG 1 Part 31 Compliant for VFD use
- IP 55 Protection - 40°C Ambient Rating
- 1045 Steel Shaft (through 326T), 4140 (326T & up)
- Multi mount Removable Feet through 326T
- One-Way Auto-purge Brass Condensation Drains
- 1.25 Service Factor to 50HP (1.15 SF above 50 HP)
- Conduit Box is 90° Rotatable
- Double Lip Shaft Seal on DE & ODE
- VPI Lap wound Stator with Tropicalization Coating
- Rubber Slinger on Shaft
- C & D Flanges Available upon request
- Available in TEFC enclosure upon request
- Class F Insulation System with Class H Stator
- F1, F2, F0 Field Convertible up to 326T (Shipped F1)
- Class 1, Div 2, Groups A,B,C & D Certified
- EISA Compliant
- 36 Month Warranty from Purchase Date

HP	Sync. Speed	NEMA Frame	Model Number	List Price
5	1800	184T	CT3-CI-TO-184T-4-B-D-5	\$1,338
7.5	1800	213T	CT3-CI-TO-213T-4-B-D-7.5	\$1,661
10	1800	215T	CT3-CI-TO-215T-4-B-D-10	\$1,807
15	1800	254T	CT3-CI-TO-254T-4-B-D-15	\$2,435
20	1800	256T	CT3-CI-TO-256T-4-B-D-20	\$2,723

HP	Sync. Speed	NEMA Frame	Model Number	List Price
25	1800	284T	CT3-CI-TO-284T-4-B-D-25	\$3,132
30	1800	286T	CT3-CI-TO-286T-4-B-D-30	\$3,552
40	1800	324T	CT3-CI-TO-324T-4-B-D-40	\$4,514
50	1800	326T	CT3-CI-TO-326T-4-B-D-50	\$5,202



HP: .33-15
Pole: 2/4/6

Frame: 56C-215T
Volt: 230/460V

RPM: 3600/1800/1200
Body: T



STANDARD FEATURES



- NEMA Premium Efficiency
- IP 56 Rated Protection
- 50/60 Hz Capable
- 1.15 Service Factor
- 9 Lead Dual Voltage
- Double Lip Oil Seals on DE & ODE
- Inverter Rated 15:1 Constant Torque for VFD use
- Multi-mount Removable Feet
- F1, F2, F3 Field Convertible (Shipped F1)
- Class F Insulation System (Class H Stator)
- One-Way Brass Condensation Drains on DE & ODE
- Designed to Class B Temperature Rise
- Drive End Bearing Locks
- VPI Insulated Windings
- EISA Compliant
- 24 Month Warranty
- Fully Potted Conduit Entry

HP	SYNC SPEED	Model Number	List Price	
			Rigid Base	C-Face
1/3	3600	WX3-AL-TF-56C-2-B-D-.33		\$483
	1800	WX3-AL-TF-56C-4-B-D-.33		\$478
1/2	3600	WX3-AL-TF-56C-2-B-D-.5		\$499
	1800	WX3-AL-TF-56C-4-B-D-.5		\$491
3/4	3600	WX3-AL-TF-56C-2-B-D-.75		\$520
	1800	WX3-AL-TF-56C-4-B-D-.75		\$518
1	3600	WX3-AL-TF-56C-2-B-D-1		\$538
	1800	WX3-AL-TF-56C-4-B-D-1		\$561
	1800	WX3-AL-TF-143T-4-B-D-1	\$641	\$693
	1200	WX3-AL-TF-145T-6-B-D-1	\$694	\$746
1.5	3600	WX3-AL-TF-56C-2-B-D-1.5		\$554
	1800	WX3-AL-TF-56C-4-B-D-1.5		\$655
	3600	WX3-AL-TF-143T-2-B-D-1.5	\$663	\$715
	1800	WX3-AL-TF-145T-4-B-D-1.5	\$678	\$730
2	1200	WX3-AL-TF-182T-6-B-D-1.5	\$857	\$961
	3600	WX3-AL-TF-56C-2-B-D-2		\$582

HP	SYNC SPEED	Model Number	List Price	
			Rigid Base	C-Face
2	1800	WX3-AL-TF-56C-4-B-D-2		\$673
	3600	WX3-AL-TF-145T-2-B-D-2	\$711	\$763
	1800	WX3-AL-TF-145T-4-B-D-2	\$710	\$762
3	1200	WX3-AL-TF-184T-6-B-D-2	\$953	\$1,057
	3600	WX3-AL-TF-56C-2-B-D-3		\$705
	3600	WX3-AL-TF-182T-2-B-D-3	\$948	\$1,052
	1800	WX3-AL-TF-182T-4-B-D-3	\$936	\$1,040
5	1200	WX3-AL-TF-213T-6-B-D-3	\$1,292	\$1,425
	3600	WX3-AL-TF-184T-2-B-D-5	\$1,011	\$1,115
	1800	WX3-AL-TF-184T-4-B-D-5	\$1,019	\$1,123
7.5	1200	WX3-AL-TF-215T-6-B-D-5	\$1,566	\$1,699
	3600	WX3-AL-TF-213T-2-B-D-7.5	\$1,394	\$1,527
10	1800	WX3-AL-TF-213T-4-B-D-7.5	\$1,408	\$1,541
	3600	WX3-AL-TF-215T-2-B-D-10	\$1,541	\$1,674
15	1800	WX3-AL-TF-215T-4-B-D-10	\$1,554	\$1,687
	3600	WX3-AL-TF-215T-2-B-D-15	\$2,147	\$2,216

HP: 3–125

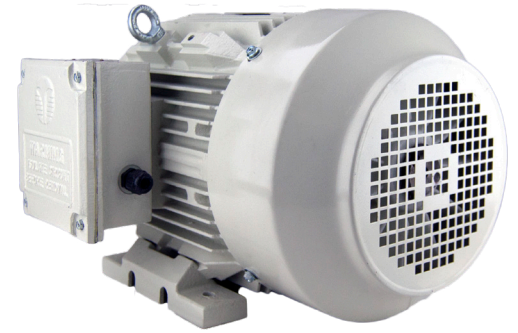
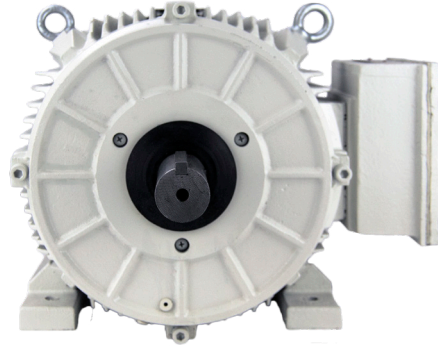
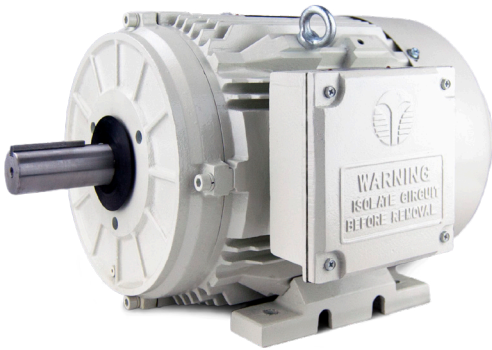
Frame: 213T–445T

RPM: 1200

Pole: 6

Volt: 230/460/796V

Body: T



STANDARD FEATURES



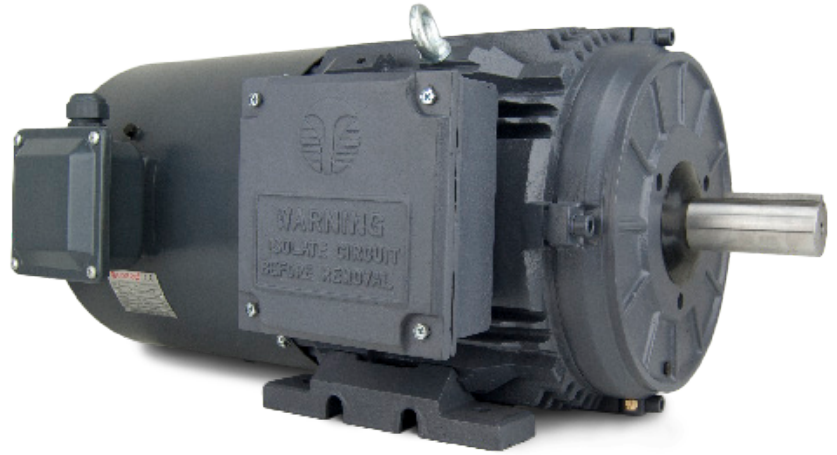
- 5% - 8% Slip NEMA Design "D" Operation
- Double Lip Oil Seals on Both Ends
- Cast Iron Terminal Box with Gasket
- Roller Bearing on 404T and Above
- TEFC Cast Iron Frame
- Corrosion Resistant Hardware
- Vacuum Impregnated Stator
- Mounting Position Convertible F1, F2, F3 (thru 326T)
- Class F Insulation System, Class H Stator
- Tropicalization on Stator Winding
- One-Way Brass Condensation Drains
- 24 Month Warranty from Date of Purchase

HP	Sync Speed	Model Number	List Price (USD)
3	1200	BK3-CI-TF-213T-6-B-G-3	\$862
5	1200	BK3-CI-TF-215T-6-B-G-5	\$1,072
7.5	1200	BK3-CI-TF-254T-6-BR-G-7.5	\$1,412
10	1200	BK3-CI-TF-256T-6-BR-G-10	\$1,686
15	1200	BK3-CI-TF-284T-6-BR-G-15	\$2,254
20	1200	BK3-CI-TF-286T-6-BR-G-20	\$2,488
25	1200	BK3-CI-TF-324T-6-BR-G-25	\$3,076
30	1200	BK3-CI-TF-326T-6-BR-G-30	\$3,753
40	1200	BK3-CI-TF-364T-6-BR-G-40	\$4,732
50	1200	BK3-CI-TF-365T-6-BR-G-50	\$5,267
60	1200	BK3-CI-TF-404T-6-RR-G-60	\$6,656
75	1200	BK3-CI-TF-405T-6-RR-G-75	\$7,545
	1200	BK3-CI-TF-444T-6-RR-G-75	\$9,526
100	1200	BK3-CI-TF-444T-6-RR-G-100	\$11,506
125	1200	BK3-CI-TF-445T-6-RR-G-125	\$12,625

Frame: 140T-440T

Volt: 115/230/460

RPM: 1745



Extends Constant Torque Range of GR3 Motors Down to 1000:1

STANDARD FEATURES

- Inverter Duty 1000:1 Turndown
- Direct Bolt-on to NEMA & IEC Frames
- Rolled Steel Construction
- Capacity: 198.35–1421.42 CFM
- Single Phase Power up to 320T Frame
- Three Phase Power 360T and up
- 18 Month Warranty
- Best use in Low Speed, Constant Torque Applications

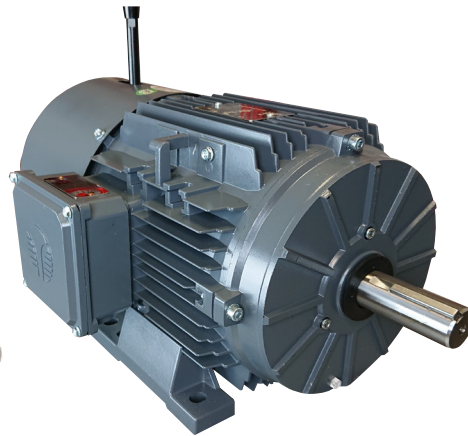


Frame	Power		Model Number	List Price (USD)
	Phase	Voltage		
140T	1	115	BLWRKIT140T	\$337
180T	1	115	BLWRKIT180T	\$448
210T	1	115	BLWRKIT210T	\$544
250T	1	115	BLWRKIT250T	\$575
280T	1	115	BLWRKIT280T	\$786
320T	1	115	BLWRKIT320T	\$1,005
360T	3	230/460	BLWRKIT360T	\$1,336
400T	3	230/460	BLWRKIT400T	\$1,600
440T	3	230/460	BLWRKIT440T	\$1,712



BRAKE MOTORS - TEFC

HP: 1/3 - 15HP Frame: 56-215T, 63 - 112 RPM: 1800/3600 Volt: 230/ 460V



STANDARD FEATURES

- NEMA Premium Energy Efficiency Design
- Rectifier Installed for 208-230 or 460V operation.
- Manual Release Lever Included
- Multimount Design with Removable Feet
- 1.15 Service Factor
- 24 Month Warranty from Purchase Date

HP	Sync. Speed	NEMA Ratings			HP	IEC Ratings			
		Base Model	List Prices			Base Model	List Prices		
			T	TC			B3	B35	B34
1/3	1800	CB3-AL-TF-56C-4-B-D-.33-BRK		\$993	1/3	GR3-AL-TF-63B3-4-B-D-.33-BRK	\$650	\$735	\$690
	3600	CB3-AL-TF-56C-2-B-D-.5-BRK		\$1,021	1/2	GR3-AL-TF-71B3-2-B-D-.5-BRK	\$716	\$814	\$776
1/2	1800	CB3-AL-TF-56C-4-B-D-.5-BRK		\$1,011	1/2	GR3-AL-TF-71B3-4-B-D-.5-BRK	\$745	\$843	\$805
	3600	CB3-AL-TF-56C-2-B-D-.75-BRK		\$1,045	3/4	GR3-AL-TF-71B3-2-B-D-.75-BRK	\$740	\$838	\$800
3/4	1800	CB3-AL-TF-56C-4-B-D-.75-BRK		\$1,042	3/4	GR3-AL-TF-71B3-4-B-D-.75-BRK	\$820	\$918	\$880
	3600	GX3-AL-TF-143T-2-B-D-1-BRK	\$1,078	\$1,131	1	GR3-AL-TF-80B3-2-B-D-1-BRK	\$998	\$1,118	\$1,042
1	1800	GX3-AL-TF-143T-4-B-D-1-BRK	\$1,206	\$1,259	1	GR3-AL-TF-80B3-4-B-D-1-BRK	\$964	\$1,084	\$1,008
	3600	GX3-AL-TF-143T-2-B-D-1.5-BRK	\$1,192	\$1,245	1.5	GR3-AL-TF-80B3-2-B-D-1.5-BRK	\$1,040	\$1,160	\$1,084
1.5	1800	GX3-AL-TF-145T-4-B-D-1.5-BRK	\$1,322	\$1,375	1.5	GR3-AL-TF-90SB3-4-B-D-1.5-BRK	\$1,121	\$1,249	\$1,185
	3600	GX3-AL-TF-145T-2-B-D-2-BRK	\$1,285	\$1,338	2	GR3-AL-TF-80B3-2-B-D-2-BRK	\$1,134	\$1,254	\$1,178
2	1800	GX3-AL-TF-145T-4-B-D-2-BRK	\$1,367	\$1,420	2	GR3-AL-TF-90SB3-2-B-D-2-BRK	\$1,199	\$1,327	\$1,263
	3600	GX3-AL-TF-182T-2-B-D-3-BRK	\$1,988	\$2,068	3	GR3-AL-TF-90LB3-4-B-D-2-BRK	\$1,262	\$1,390	\$1,326
3	1800	GX3-AL-TF-182T-4-B-D-3-BRK	\$2,015	\$2,119	3	GR3-AL-TF-90LB3-2-B-D-3-BRK	\$1,283	\$1,411	\$1,347
	3600	GX3-AL-TF-184T-2-B-D-5-BRK	\$2,084	\$2,164	3	GR3-AL-TF-100LB3-4-B-D-3-BRK	\$1,671	\$1,919	\$1,751
5	1800	GX3-AL-TF-184T-4-B-D-5-BRK	\$2,175	\$2,279	4	GR3-AL-TF-100LB3-2-B-D-4-BRK	\$1,685	\$1,933	\$1,765
	3600	GX3-AL-TF-213T-2-B-D-7.5-BRK	\$2,697	\$2,801	4	GR3-AL-TF-100LB3-4-B-D-4-BRK	\$1,781	\$2,029	\$1,861
7.5	1800	GX3-AL-TF-213T-4-B-D-7.5-BRK	\$2,821	\$2,954	5.5	GR3-AL-TF-112MB3-2-B-D-5.5-BRK	\$2,033	\$2,291	\$2,143
	3600	GX3-AL-TF-215T-2-B-D-10-BRK	\$2,860	\$2,993	5.5	GR3-AL-TF-112MB3-4-B-D-5.5-BRK	\$2,209	\$2,467	\$2,319
10	1800	GX3-AL-TF-215T-4-B-D-10-BRK	\$3,103	\$3,236	7.5	GR3-AL-TF-132SB3-4-B-D-7.5-BRK	\$2,796	\$3,162	\$2,964
	3600	GX3-AL-TF-215T-2-B-D-15-BRK	\$3,428	\$3,560	10	GR3-AL-TF-132MB3-4-B-D-10-BRK	\$3,062	\$3,428	\$3,230

Multiplier Code: BK



2815 Colonnades Court
Peachtree Corners, Ga 30071



1-855-832-4867
fax: 1-866-204-1498



info@techttopind.com
www.techttop.com

Cast Iron C-Face Conversion Kit



Part #	Description	List Price
CFK140T	143/5T Frame C-Face Kit	\$44
CFK180T	182/4T Frame C-Face Kit	\$84
CFK210T	213/5T Frame C-Face Kit	\$109
CFK250T	254/6T Frame C-Face Kit	\$147
CFK280T	284/6T Frame C-Face Kit	\$206
CFK320T	324/6T Frame C-Face Kit	\$294
CFK360T	364/5T Frame C-Face Kit	\$438
CFK400T-2P	404/5T Frame 2 Pole C-Face Kit	\$613
CFK400T-4,6P	404/5T Frame 4/6 Pole C-Face Kit	\$613
CFK440T-2P	444/5/7T Frame 2 Pole C-Face Kit	\$747
CFK440T-4,6P	444/5/7/9T Frame 4/6 Pole C-Face Kit	\$747

Aluminum C-Face Conversion Kit



Part #	Description	List Price
CFK56-S	56C Frame C-Face Kit	\$25
CFK140T-AL-01	143/5T Frame C-Face Kit	\$44
CFK180T-AL-01	182/4T Frame C-Face Kit	\$84
CFK210T-AL-01	213/5T Frame C-Face Kit	\$109

Rolled Steel TEFC C-Face Kit



Part #	Description	List Price
CFK56RS-TF-1	56 Frame Single Phase C-Face Kit	\$19
CFK140T-RS-TF-1	143/5T Frame Single Phase C-Face Kit	\$19
CFK180TRS-TF-1	182/4T Frame Single Phase C-Face Kit	\$56
CFK210TRS-TF-1	213/5T Frame Single Phase C-Face Kit	\$91

D-Flange Conversion Kit



Part #	Description	List Price
DFK140T	143/5T Frame D-Flange Kit	\$63
DFK180T	182/4T Frame D-Flange Kit	\$94
DFK210T	213/5T Frame D-Flange Kit	\$125
DFK250T	254/6T Frame D-Flange Kit	\$231
DFK280T	284/6T Frame D-Flange Kit	\$300
DFK320T	324/6T Frame D-Flange Kit	\$488
DFK360	364/365 Frame D-Flange Kit	\$594
DFK400-2	404/5 Frame 2 Pole D-Flange Kit	\$731
DFK400-4,6	404/5 Frame 4/6 Pole D-Flange Kit	\$731
DFK440-2	444/5/7/9 Frame 2 Pole D-Flange Kit	\$853
DFK440-4,6	444/5/7/9 Frame 4/6 Pole D-Flange Kit	\$853

Aluminum Conduit Box



Part #	Description	List Price
AB140-GX	143/5T Frame Conduit Box	\$25
AB180	182/4T Frame Conduit Box	\$44
AB210	213/5T Frame Conduit Box	\$44

Cast Iron Conduit Box



Part #	Description	List Price
CB140	143/5T Frame Conduit Box	\$25
CB180	182/4T Frame Conduit Box	\$44
CB210	213/5T Frame Conduit Box	\$44
CB250	254/6T Frame Conduit Box	\$59
CB280	284/6T Frame Conduit Box	\$59
CB320	324/6T Frame Conduit Box	\$113
CB360	364/5T Frame Conduit Box	\$181
CB400	404/5T Frame Conduit Box	\$197
CB440	444/5/7/9T Frame Conduit Box	\$244

Cast Iron Feet (Pair)



Part #	Description	List Price
CRF143	143T Frame Cast Iron Feet	\$13
CRF145	145T Frame Cast Iron Feet	\$13
CRF182	182T Frame Cast Iron Feet	\$19
CRF184	184T Frame Cast Iron Feet	\$19
CRF213	213T Frame Cast Iron Feet	\$28
CRF215	215T Frame Cast Iron Feet	\$28
CRF254	254T Frame Cast Iron Feet	\$47
CRF256	256T Frame Cast Iron Feet	\$47
CRF284	284T Frame Cast Iron Feet	\$88
CRF286	286T Frame Cast Iron Feet	\$88
CRF324	324T Frame Cast Iron Feet	\$106
CRF326	326T Frame Cast Iron Feet	\$106

Aluminum Feet (Pair)



Part #	Description	List Price
ARF143-J	143T Frame Aluminum Feet	\$13
ARF145-J	145T Frame Aluminum Feet	\$13
ARF182-J	182T Frame Aluminum Feet	\$19
ARF184-J	184T Frame Aluminum Feet	\$19
ARF213-J	213T Frame Aluminum Feet	\$28
ARF215-J	215T Frame Aluminum Feet	\$28

Continued on back

Run Capacitors



Part #	Description	List Price
RCAP250v-30uf	Run Capacitor - 250V, 30uf	\$72
RCAP250v-40uf	Run Capacitor - 250V, 40uf	\$97
RCAP250v-60uf	Run Capacitor - 250V, 60uf	\$124
RCAP250v-80uf	Run Capacitor - 250V, 80uf	\$154
RCAP250v-100uf	Run Capacitor - 250V, 100uf	\$173
RCAP250v-115uf	Run Capacitor - 250V, 115uf	\$191
RCAP450v-20uf	Run Capacitor - 450V, 20uf	\$69
RCAP450v-30uf	Run Capacitor - 450V, 30uf	\$103
RCAP450v-40uf	Run Capacitor - 450V, 40uf	\$119
RCAP450v-50uf	Run Capacitor - 450V, 50uf	\$169

Start Capacitors



Part #	Description	List Price
SCAP125v-200uf	Start Capacitor - 125v, 200uf	\$22
SCAP125v-250uf	Start Capacitor - 125v, 250uf	\$28
SCAP125v-300uf	Start Capacitor - 125v, 300uf	\$31
SCAP165v-300uf	Start Capacitor - 165v, 300uf	\$37
SCAP165v-400uf	Start Capacitor - 165v, 400uf	\$44
SCAP165v-500uf	Start Capacitor - 165v, 500uf	\$49
SCAP330v-250uf	Start Capacitor - 330v, 250uf	\$74
SCAP330v-350uf	Start Capacitor - 330v, 350uf	\$82
SCAP350v-400uf	Start Capacitor - 350v, 400uf	\$91
SCAP350v-500uf	Start Capacitor - 350v, 500uf	\$103

Manual Reset Thermal Overload



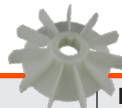
Part #	Description	List Price
MRT0033	4 Pole - 0.33 HP	\$75
MRT0050	4 Pole - 0.5 HP	\$75
MRT0075	4 Pole - 0.75 HP	\$84
MRT0100	4 Pole - 1 HP	\$94
MRT0150	4 Pole - 1.5 HP	\$103
MRT0200	4 Pole - 2 HP	\$122
MRT0300	4 Pole - 3 HP	\$150
MRT0500	4 Pole - 5 HP	\$169
MRT0750	4 Pole - 7.5 HP	\$206
MRT1000	4 Pole - 10 HP	\$225

Centrifugal Switches



Part #	Description	List Price
CSF56-4	56 Frame - 4 Pole Fixed	\$25
CSR56-4	56 Frame - 4 Pole Rotating	\$25
CSF180-4	182/4 Frame - 4 Pole Fixed	\$38
CSR180-4	182/4 Frame - 4 Pole Rotating	\$38
CSF210-4	213/5 Frame - 4 Pole Fixed	\$44
CSR210-4	213/5 Frame - 4 Pole Rotating	\$44

Plastic Fan



Part #	Description	List Price
PRF140-2	143/5T Frame 2 Pole Fan	\$25
PRF180-2	182/4T Frame 2 Pole Fan	\$41

Plastic Fan (Continued)

PRF210-2	213/5T Frame 2 Pole Fan	\$56
PRF250-2	254/6T Frame 2 Pole Fan	\$84
PRF280-2,4	284/6T Frame 2/4 Pole Fan	\$113
PRF280-6	284/6T Frame 6 Pole Fan	\$113
PRF320-2	324/6T Frame 2 Pole Fan	\$188
PRF320-4,6	324/6T Frame 4/6 Pole Fan	\$188
PRF360-2	364/5T Frame 2 Pole Fan	\$247
PRF360-4,6	364/5T Frame 4/6 Pole Fan	\$247
PRF400-2	404/5T Frame 2 Pole Fan	\$306
PRF400-4,6	404/5T Frame 4/6 Pole Fan	\$306
PRF440-2	444/5/7/9T Frame 2 Pole Fan	\$353
PRF440-4,6	444/5/7/9T Frame 4/6 Pole Fan	\$353

Steel Fan Cover



Part #	Description	List Price
SFC140	143/5T Steel Fan Cover	\$9
SFC180	182/4T Steel Fan Cover	\$16
SFC210	213/5T Steel Fan Cover	\$19
SFC250	254/6T Steel Fan Cover	\$28
SFC280	284/6T Steel Fan Cover	\$44
SFC320	324/6T Steel Fan Cover	\$53
SFC360	364/6T Steel Fan Cover	\$125
SFC400	404/5T Steel Fan Cover	\$150
SFC440	444/5/7/9T Steel Fan Cover	\$234

Cast Iron Fan Cover



Part #	Description	List Price
CFC140T	143/5T Frame Fan Cover	\$97
CFC180T	182/4T Frame Fan Cover	\$131
CFC210T	213/5T Frame Fan Cover	\$181
CFC250T	254/6T Frame Fan Cover	\$263
CFC280T	284/6T Frame Fan Cover	\$391
CFC320T	324/6T Frame Fan Cover	\$475
CFC360T	364/5T Frame Fan Cover	\$488
CFC400T	404/5T Frame Fan Cover	\$616
CFC440T	444/5/7/9T Frame Fan Cover	\$738

Steel Drip Cover



Part #	Description	List Price
DC56	Aluminum Frame 56C Drip Cover	\$22
DC140	143/5T Cast Iron Frame only Drip Cover	\$27
DC140-SFC	143/5T Frame Drip Cover (SFC only)	\$27
DC180	182/4T Frame Drip Cover	\$30
DC210	213/5T Frame Drip Cover	\$43
DC250	254/6T Frame Drip Cover	\$81
DC280	284/6T Frame Drip Cover	\$96
DC320	324/6T Frame Drip Cover	\$131
DC360	364/5T Frame Drip Cover	\$181
DC400	404/5T Frame Drip Cover	\$256
DC440	444/5/7/9T Frame Drip Cover	\$328

CALL FOR PARTS NOT LISTED: 1-855-832-4867

TD20 COMPACT VFD

- Vector Drive SVC, VC, V/F Control
- LED Keypad with Potentiometer
- 2AI, 2AO, 5DI, 1DO, 2RO
- Speed, Torque Control
- IP20 (IP21/NEMA 1 Kit)
- Wall Or DIN Rail Mount
- PID Control
- Modbus RTU/RS485
- 12 Month Warranty

HP	Voltage	Phases	Frame	Output Amps	Model Number	List Price
0.5	115	1	2	2.5	TD20-0R4G-S1	395
	230	1	1	2.5	TD20-0R4G-S2	317
	230	3	2	2.5	TD20-0R4G-2	414
1	115	1	2	4.2	TD20-0R7G-S1	426
	230	1	1	4.2	TD20-0R7G-S2	333
	230	3	2	4.2	TD20-0R7G-2	449
	460	3	2	2.5	TD20-0R7G-4	437
1.5	115	1	2	5.8	TD20-1R1G-S1	524
2	230	1	2	7.5	TD20-1R5G-S2	403
	230	3	2	7.5	TD20-1R5G-2	524
	460	3	2	4.2	TD20-1R5G-4	472
3	230	1	2	10	TD20-2R2G-S2	515
	230	3	2	10	TD20-2R2G-2	564
	460	3	2	5.5	TD20-2R2G-4	518



TD350 HIGH PERFORMANCE VFD

- Vector Drive - SVC, VC V/F Control
- Multiple Motor Capable
- Bluetooth, Wifi, USB
- Speed, Torque and Position Control
- Regenerative Control Power
- Safe Torque Off Function
- Open or Closed Loop Operation
- Removable LCD Keypad
- Internal DC Filter
- PID Control
- 230 and 460V Input Available
- IP20 (IP21, NEMA 1 Kit)
- Asynchronous AC and PMAC motors
- Output 0HZ - 400HZ
- 2AI, 1AO, 6DI, 1DO, 2RO
- Expansion and Comm Cards
- 12 Month Warranty

HP	Voltage	Phases	Frame	Output Amps	Model Number	List Price
5	230	3	3	16	TD350-004G-2	972
	460	3	2	9.5	TD350-004G-4	857
7.5	230	3	3	20	TD350-5R5G-2	1160
	460	3	2	14	TD350-5R5G-4	1008
10	230	3	4	30	TD350-7R5G-2	1455
	460	3	3	18.5	TD350-7R5G-4	1122
15	230	3	5	42	TD350-011G-2	2226
	460	3	3	25	TD350-011G-4	1448
20	460	3	4	32	TD350-015G-4	1754
25	460	3	4	38	TD350-018G-4	2065
30	460	3	5	45	TD350-022G-4	2386
40	460	3	5	60	TD350-030G-4	2972
50	460	3	6	75	TD350-037G-4	3732
60	460	3	6	92	TD350-045G-4	4545
75	460	3	6	115	TD350-055G-4	5308
100	460	3	7	150	TD350-075G-4	5518
125	460	3	7	180	TD350-090G-4	6608
150	460	3	7	215	TD350-110G-4	7873
200	460	3	8	305	TD350-160G-4	13614



TOP DRIVE VFD ACCESSORIES

MODEL NUMBER	SERIES	DESCRIPTION	LIST PRICE
KEYPADS			
TD20-KEYPAD	TD20	REMOTE KEYPAD	29
TD20-KEYBRKT	TD20	RECESSED MOUNT BRACKET	6
TD20-COPY	TD20	COPY MODULE	46
TD350-KEYPAD	TD350	REMOTE KEYPAD	75
TD350-KEYBRKT	TD350	RECESSED MOUNT BRACKET	6
TD-KEC-03M	-	3 METER KEYPAD CABLE	23
TD-KEC-10M	-	10 METER KEYPAD CABLE	75
NEMA 1 / IP21 CONVERSION KITS			
TD20N1KIT-1	TD20	FOR FRAME 1	6
TD20N1KIT-2	TD20	FOR FRAME 2	6
TD350NKIT-2	TD350	FOR FRAME 2	35
TD350NKIT-3	TD350	FOR FRAME 3	41
TD350NKIT-4	TD350	FOR FRAME 4	46
TD350NKIT-5	TD350	FOR FRAME 5	58
TD350NKIT-6	TD350	FOR FRAME 6	121
TD350NKIT-7	TD350	FOR FRAME 7	141
DYNAMIC BRAKING UNIT (DBU)			
DBU-055-2	TD350	25 HP AND LARGER (200V)	558
DBU-055-4	TD350	25 HP AND LARGER (400V)	656
FLAT BRAKING RESISTORS			
19005-00198	-	120W/150Ω	46
19005-00199	-	250W/150Ω	58
19005-00200	-	500W/100Ω	87
19005-00201	-	600W/100Ω	92
19005-00202	-	1000W/85Ω	179
19005-00203	-	1500W/65Ω	219
19005-00204	-	1560W/40Ω	207
19005-00207	-	3000W/27Ω	397
19005-00208	-	4500W/20Ω	621
19005-00209	-	6000W/13.6Ω	633
19005-00196	-	12000W/6.8Ω	920

MODEL NUMBER	SERIES	DESCRIPTION	LIST PRICE
ENCODER CARDS			
TD3505VENC	TD350	5V DIFFERENTIAL INCR (H1)	202
TD3505/12VENC	TD350	5V/12V MULTIFUNCTIONAL (H2)	173
TD35024VENC	TD350	24V DIFFERENTIAL INCR	173
TD350RSLVR	TD350	5V DIFFERENTIAL INCR	202
COMMUNICATION CARDS			
TD350PROFINET	TD350	PROFINET	374
TD350ETH	TD350	ETHERNET/IP	173
TD350PROFIBUS	TD350	PROFIBUS DP	345
PANEL MOUNTING KITS			
TD350FMP2	TD350	FOR FRAME 2	23
TD350FMP3	TD350	FOR FRAME 3	29
TD350FMP4	TD350	FOR FRAME 4	29
TD350FMP5	TD350	FOR FRAME 5	35
Load Reactor (460V Output)			
TD350004G4OUTR	TD350	FOR 5 HP MOTORS	161
TD3505R5G4OUTR	TD350	FOR 7.5 HP MOTORS	225
TD3507R5G4OUTR	TD350	FOR 10 HP MOTORS	242
TD350011G4OUTR	TD350	FOR 15 HP MOTORS	271
TD350015G4OUTR	TD350	FOR 20 HP MOTORS	317
TD350018G4OUTR	TD350	FOR 25 HP MOTORS	403
TD350022G4OUTR	TD350	FOR 30 HP MOTORS	414
TD350030G4OUTR	TD350	FOR 40 HP MOTORS	587
TD350037G4OUTR	TD350	FOR 50 HP MOTORS	627
TD350045G4OUTR	TD350	FOR 60 HP MOTORS	673
TD350055G4OUTR	TD350	FOR 75 HP MOTORS	702
TD350075G4OUTR	TD350	FOR 100 HP MOTORS	719
TD350090G4OUTR	TD350	FOR 125 HP MOTORS	1122
TD350110G4OUTR	TD350	FOR 150 HP MOTORS	1168
TD350160G4OUTR	TD350	FOR 200 HP MOTORS	1306



Braking Resistor

Remote Keypad

Reactor

CONTACT US:



Customer Service
1-678-436-5540
info@techtopynd.com



Online Support
info@techtopynd.com
www.techtopynd.com



Corporate Office
2815 Colonnades Court
Peachtree Corners, GA 30071
USA



WWW.TECHTOP.COM